



FULL ASSORTMENT — FOR REAL PROFESSIONALS

TABLE OF CONTENTS

Fixing clips	2
Expandable batons	6
Carrying expandable batons	11
Accessories for expandable batons	13
Equipment for training	17
Standard police batons • Tonfas	18
Rescue knives	20
Spray flashlights TORNADO and HURRICANE ...	23
Pepper sprays	24
Carrying defensive sprays	26
Stun guns + holders	28
Police shields • Capture shield	30
Textile disposable handcuffs + holders	34
Metal handcuffs + holders	36
Palm-stick • Tactical pens	37
Tactical flashlights	38
Pocket flashlights	40
Carrying flashlights	40
Night police set	42
Detection mirrors	43
Pistol and rifle magazine holders	44
Tactical targets series	48
Accessories for firearms	49
Tactical backpack • Duty belt	50



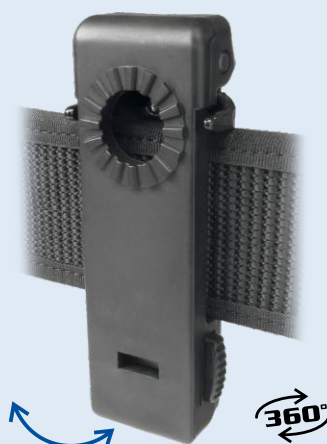
Photos of our belt clips
can be found on the
other side of this flap.

OPEN

UBC-01



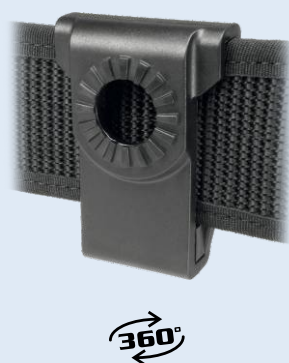
UBC-02



paddle



UBC-03

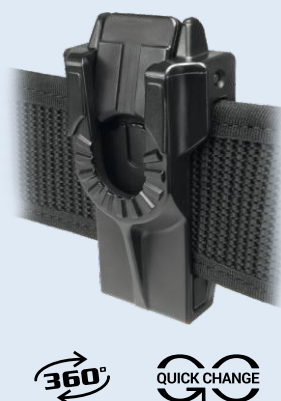


the belt is passed through the clip

UBC-04



UBC-05



the belt is passed through the clip

UBC-07



UBC-08



COMPREHENSIVE SYSTEM OF ESP FIXING CLIPS

We would like to use this opportunity to present the belt clips we produce for our plastic as well as nylon holders. These **clips are located at the back** of every holder and **determine the way the holder is carried** and how it is attached to a **belt** or to a **MOLLE system**. Since you will see these clips throughout the whole catalogue, we would like to thoroughly describe them at its start.

There are nine variations of the belt clips in our offer – therefore there are nine possible ways of attaching the holder to your belt or gear. We produce **eight plastic rotation clips**; one of our clips is made of metal and cannot be rotated.

At first sight, it might seem there are perhaps too many variations of the belt clips – but when you examine them more closely, you will find out each clip has its unique advantages and is suitable for a different type of use. Thanks to this variety, truly everyone is able to pick the most appropriate mode of carrying an ESP holder, be it on the belt, on MOLLE or directly attached to the trousers.

UBC-05



How to make sense of it all and pick the right holder?

Each holder we produce is composed of:

1. The **holder body** (without the fixation clip), which determines what you will carry inside the holder (for example a baton, a flashlight, a defensive spray or a weapon magazine).
2. The **fixation clip**, for example UBC-01 or UBC-02, or the metal clip, paddle etc.

First choose the holder body according to what you intend to carry inside it (a baton, a flashlight, a defensive spray ...) and according to how you want this equipment to be secured.

Then choose the type of the fixation clip according to where you want to carry the holder – on a belt, on a MOLLE, or directly on trousers.

holder body + fixation clip = complete holder

MH-x4 + UBC-01 = MH-04



To help you choose the correct belt clip, there is a flap on this page of the catalogue. If you keep it open while browsing the catalogue, you will be able to check all the ESP clips anytime you want.

Holders with metal clip

This is a basic way of carrying the holder. The flexible metal clip enables you to **quickly attach** the holder to the belt **without the need to unbuckle it**. The metal clip is attached to the holder body with a rivet. Due to this fact, it is the only clip from our selection which **does not allow for the 360° rotation** of the holder in relation to the belt.

- This metal clip has been designed for belts with the width **from 45 to 50 mm**.



Holders with plastic rotation clips

Plastic rotation clips allow for advanced attachment of the holders onto your gear. Most of them are designed to be worn on the belt, but some of them enable fixation to the MOLLE system as well.

All of the plastic clips allow for the **rotation of the holder body in the scale of 360°**. The grooved rotation plate enables turning the holder into **16 fixed positions**. The holder body is connected to the clip with a screw via a flexible washer thanks to which **no tools are necessary to rotate the holder**. You can adjust the force needed to rotate the holder by tightening the screw according to your needs.

The equipment inside the holder can be rotated into a position which is most suitable for you to quickly draw it or which keeps it out of your way during movement. For example while driving a car, you can **turn the baton holder parallel** to your belt.

The plastic clips with the **Quick Change system** form a separate group which we will describe on page 4.



UBC-01 Belt clip



This type of clip enables rapid attachment of the holder to a belt **with one hand only** and **without the necessity of unbuckling the belt**. This clip is **patented** in the USA.

The holder can be **rotated in the full scope of 360 degrees** without the use of any tools (it has 16 fixed positions).

- The clip has been designed for belts with the width **from 32 to 55 mm**.
- Weight: 59 g



UBC-02 Belt clip



This type of clip enables rapid attachment of the holder to a belt **with one hand only** and **without the necessity of unbuckling the belt**. In comparison with fixing clip **UBC-01**, the distance between the belt and the holder is smaller with this type of clip.

The holder can be **rotated in the full scope of 360 degrees** without the use of any tools (it has 16 fixed positions).

It can be alternatively **fastened to MOLLE MIL STD webbing**.

- The clip has been designed for belts with the width **from 25 to 60 mm**.
- Weight: 78 g



ESP Paddle



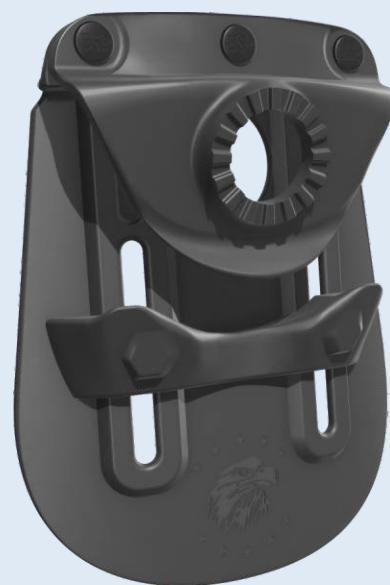
The clip of the "Paddle" type **developed by the ESP company** facilitates **comfortable all-day carrying** of any ESP holder with a rotation mechanism. Its special bent shape fits snugly to the user's body and allows for secure carrying of a holder with self-defense or tactical equipment.

One of the Paddle's advantages is its **adjustability to a belt** of a width **between 35 to 62 mm** with the help of an adjustable slide with two screws. Thanks to this the Paddle can be worn **discreetly on the inner side of the trousers** or it can be fitted outside on a **regular duty belt**. The Paddle provides security and comfort while carrying **heavier equipment**, for instance full longer magazines.

This Paddle is **protected** by European Community Design.

The ESP Paddle enables the holster to be **rotated in the full scope of 360 degrees** without the use of any tools (it has 16 fixed positions).

- Dimensions: 90 × 115 mm (width × height)



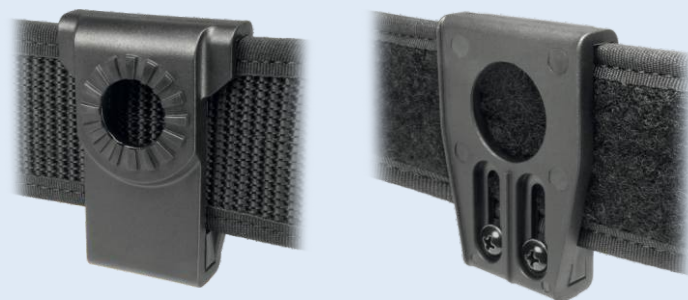
UBC-03 Belt clip



The holder is attached in the usual way **by slipping the belt through the hole** in the clip. The holder can be **rotated in the full scope of 360 degrees** without the use of any tools (it has 16 fixed positions).

Its **design is patented** in Europe and in the USA.

- The clip **can be adjusted** to the belt width **from 32 to 60 mm** by an adjustable stop with two screws.
- Weight: 33 g



UBC-04 MOLLE clip

This type of clip allows **secure and firm fixation** of ESP holders to a **MOLLE webbing** with the possibility of **360° rotation** and fixing in 16 locking positions (without the use of any tool).

ESP holders (supplied with UBC-04 clip) can be attached to any present-day **tactical/ballistic vest** or **tactical backpacks** just by inserting the plastic fixing plug of the UBC-04 into the MOLLE straps.

Its **design is patented** in Europe and in the USA. Weight: 23 g

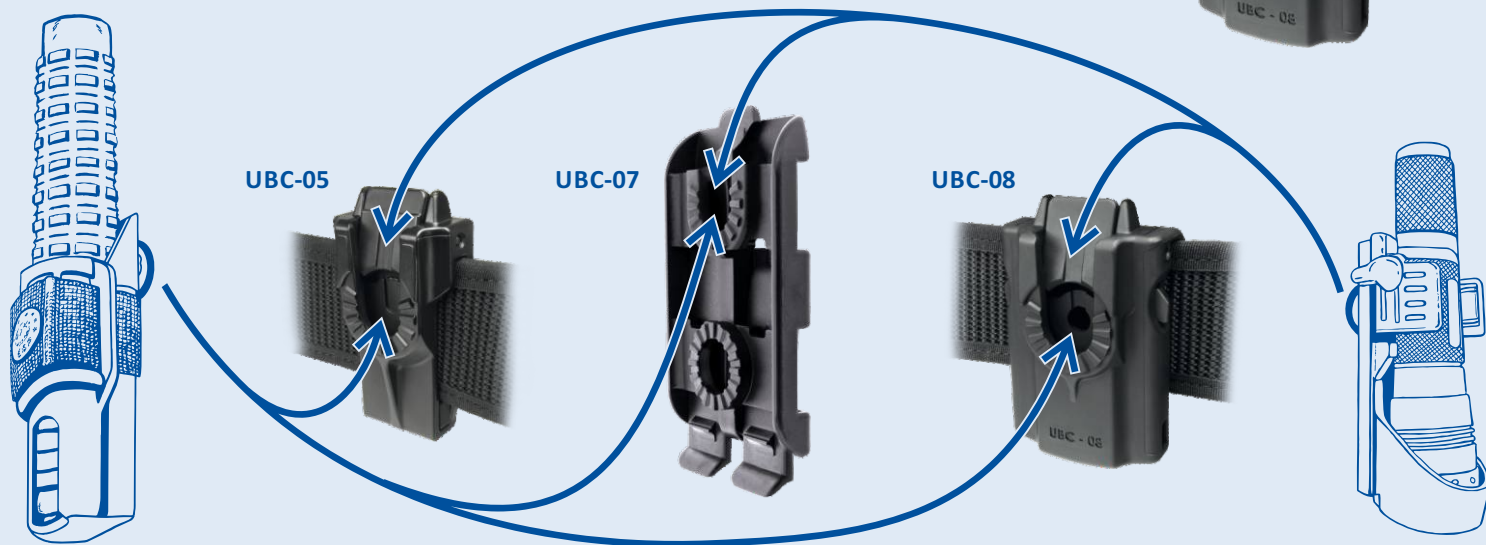


Holders with Quick Change system

These universal clips enable the user to **quickly change** between different plastic and nylon ESP holders with rotation mechanism. The clip itself **remains fastened to the belt or to a MOLLE webbing** – you only need to click on the holder of choice.

Thanks to this highly flexible system, the user is able to change his or her equipment **according to the particular needs** at a given moment. A baton holder can be switched for a flashlight holder or for a magazine holder. In case of need – for example when the police officer is busy with administrative work – the holders that are currently not necessary can be put away completely.

The holder can be smoothly **rotated in the range of 360 degrees** without the use of any tool (there are 16 possible fixed positions).



UBC-05 Belt clip



The belt is **pulled through the opening** in the body of the clip. The holder is then slid onto the clip and secured with locking mechanism.

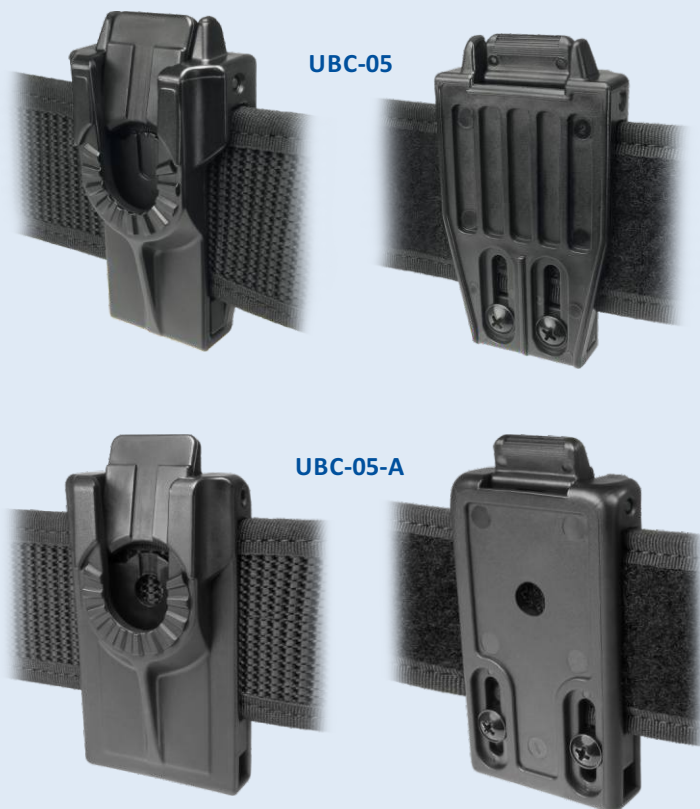
This universal clip enables the user to **quickly change** between different plastic and nylon ESP holders with rotation mechanism. The clip itself **remains fastened to the belt** – you only need to click on the holder of choice.

The holder can be **rotated in the full scope of 360 degrees** without the use of any tools (it has 16 fixed positions).

Its **design is patented** in Europe and in the USA.

The clip can be adjusted to the belt by an adjustable stop with two screws.

Type	Designed for belts with the width	Weight
UBC-05	32 – 60 mm	45 g
UBC-05-A	38 – 68 mm	50 g



UBC-07 MOLLE clip



ESP holders (supplied with UBC-07 clip) can be attached to any present-day **tactical/ballistic vest** or **tactical backpacks** just by inserting the plastic fixating plug of the UBC-07 into the MOLLE straps.

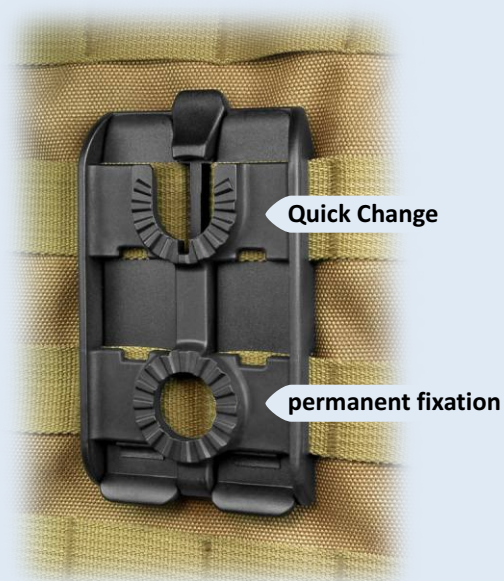
This universal clip enables the user to **quickly change** between different plastic and nylon ESP holders with rotation mechanism. The clip itself **remains fastened to a MOLLE webbing** – you only need to click on the holder of choice.

The holder can be smoothly **rotated in the range of 360 degrees** without the use of any tool (there are 16 possible fixed positions).

The holder can also be permanently fixed to the clip thanks to the second rotation mechanism.

The Quick Change system of this clip cannot be used to carry holders with bulkier equipment, for example expandable batons or rifle magazines.

- Weight: 47 g



UBC-08 Belt clip



This type of clip enables rapid attachment of the holder to a belt **with one hand only** and **without the necessity of unbuckling the belt**.

This universal clip enables the user to **quickly change** between different plastic and nylon ESP holders with rotation mechanism. The clip itself **remains fastened to the belt** – you only need to click on the holder of choice.

The holder can be **rotated in the full scope of 360 degrees** without the use of any tools (it has 16 fixed positions).

Its **design is patented** in Europe and in the USA.

- The clip has been designed for belts with the width **from 37 to 60 mm**.
- Weight: 77 g



HARDENED EXPANDABLE BATONS

The hardened baton is designated for **professional use** by the police and other security forces. Its tubes are made of high quality **hardened steel**, tested over years with millions of batons already produced using this steel. The hardening makes the telescopic tubes **extremely resistant** against bending even during powerful strikes.

We produce expandable batons with **2 types of locking mechanism**:

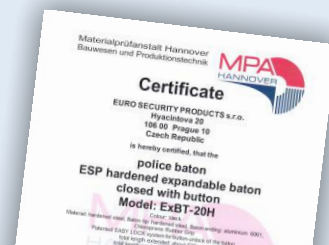
- **Easy Lock** (closed with button) type **ExBTT / ExBT**
- **Friction Lock** type **ExB**

ExBTT ExBT Button-unlock hardened expandable baton (Easy Lock)

This type of baton can be opened by **swinging the handle** into a free space or by **pulling out the tubes** by the baton's tip. If the baton is carried in the **BHT** type holder, the tubes of the baton **will automatically extend when it's pulled out of the holder**. The **patented locking mechanism** then locks the tubes into the expanded position.



Easy Lock hardened batons are certified by **MPA Hannover, Germany**, meeting **German standards** for telescopic batons.



Closing the baton

The best feature of this baton is the push button closing method. The lock is released when you **press the button** at the end of the handle and **push the baton tip inward**. The tubes can then easily be pushed back inside the handle.

The baton can always be closed easily and effortlessly, no matter the force with which the baton opened. There's also no need to look for any hard surface to close the baton as you would with a Friction Lock expandable baton.

The baton **can be closed only with the button** located at the end of the handle. It is not possible to close it by hitting it on a hard surface as that may cause damage to the baton mechanism.

Resistance test

During drop tests the baton was dropped **from a 2-meter height onto concrete** (the German standard requires only wood, which is a much softer surface). It was then possible to close the baton as smoothly as before.

The baton has been tested by **opening and closing 6 000 times**, and the mechanism continues to perform flawlessly. The locking mechanism was tested repeatedly by **submerging the baton into mud** and then operating normally.

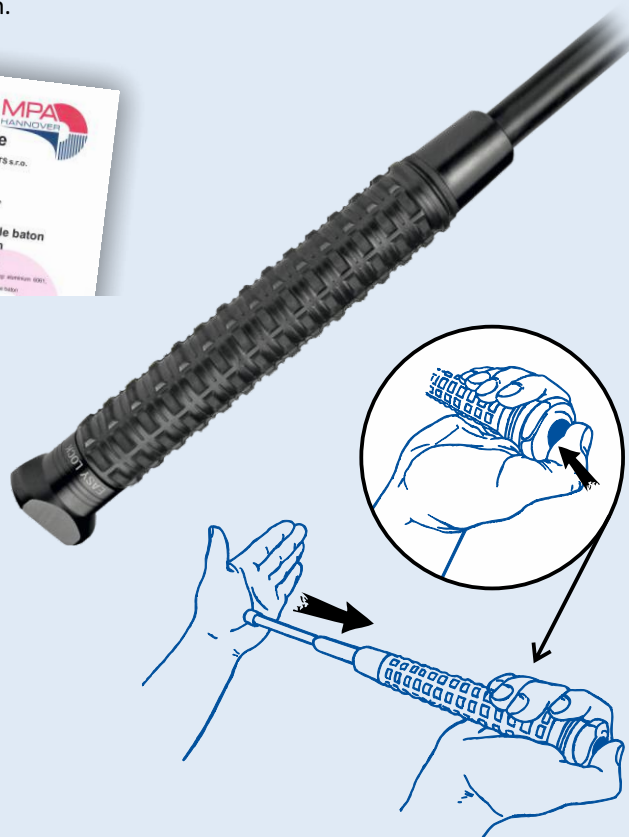
The **black nickel-zinc** surface treatment of the baton's telescopic tubes ensures resistance against scratching.

We produce the baton with **two types of endings**:

- a **triangular ending**, which prevents the baton from rolling away on a smooth surface type **ExBTT**
- a **round ending**, which is more compact type **ExBT**



Due to the button located in the baton ending, **it is not possible to add any accessories to the baton handle**. Only detection mirrors **BM-02** and **BM-03** can be fitted onto the baton, other ESP accessories are not compatible.



Type	Length (expanded) *	Type of handle	Designation of the baton		Surface treatment	Length (closed) *	Weight
			in set with the holder	without holder			
Easy Lock	16" 410 mm	anti-slip	ExBT-16H holder BHT-54	ExBTO-16H	black	7,48" 190 mm	410 g
			ExBTT-16H holder BHT-54	ExBTTO-16H			
		ergonomic	ExBT-16HE holder BHT-54	ExBTO-16HE			
			ExBTT-16HE holder BHT-54	ExBTTO-16HE			
	18" 460 mm	anti-slip	ExBT-18H holder BHT-54	ExBTO-18H	black	8,18" 208 mm	443 g
			ExBTT-18H holder BHT-54	ExBTTO-18H			
		ergonomic	ExBT-18HE holder BHT-54	ExBTO-18HE			
			ExBTT-18HE holder BHT-54	ExBTTO-18HE			
	20" 508 mm	anti-slip	ExBT-20H holder BHT-55	ExBTO-20H	black	8,8" 224 mm	480 g
			ExBTT-20H holder BHT-55	ExBTTO-20H			
		ergonomic	ExBT-20HE holder BHT-55	ExBTO-20HE			
			ExBTT-20HE holder BHT-55	ExBTTO-20HE			
	24" 615 mm	anti-slip	ExBT-24H holder BHT-55	ExBTO-24H	black	10,12" 257 mm	544 g
			ExBTT-24H holder BHT-55	ExBTTO-24H			
		ergonomic	ExBT-24HE holder BHT-55	ExBTO-24HE			
			ExBTT-24HE holder BHT-55	ExBTTO-24HE			

BHT-55



* length tolerance:
-0,6" / +0,4" (-15,2 mm / +10,1 mm)

ESP BATONS AROUND THE WORLD

Our expandable batons are used daily by a wide range of armed forces in:

- the **Czech Republic** – almost all law enforcement units
- the **United Kingdom** – the **Metropolitan Police** and other major Police Forces
- **France** – National Police (*Police nationale*), National Gendarmerie (*Gendarmerie nationale*) and Municipal Police (*Police municipale*)
- **Spain** – National Police (*Cuerpo Nacional de Policía*), Civil Guard (*Guardia Civil*) and other major Police Forces (*Mossos d'Esquadra*)
- **Poland** – National Police, Municipal Police and Police Academy
- **Thailand | Indonesia | Egypt | Venezuela | Mexico | Georgia | Latvia**
and many other countries all over the world



www.esp-link.com/baton-durability



www.esp-link.com/baton-accessories

ExB Hardened expandable baton (Friction Lock)

This type of baton can be opened by a **sharp swing of the handle** into a free space. The expanded telescopic tubes are then firmly secured by the **friction** of the cones.

The baton can be closed by **hitting a hard and firm surface** with the tip of the baton. The more powerful the swing when opening the baton, the firmer the locking of the tubes into the expanded position – but it is then also more difficult to close the baton.

The ESP hardened batons **meet the requirements of the German standard** for telescopic batons (with the exception of the button-unlock batons).

These expandable batons are produced with a **black nickel-zinc** surface treatment (with good resistance against scratching) or with a **white chrome** surface treatment.

This baton **can be used with any accessories** from our selection.



ExB-21HE



Types of handles for Easy Lock and Friction Lock batons:

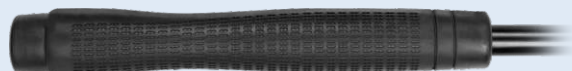
Specially designed **rubber handle** enables a **secure hold**. The rubber material **is certified** for long-term contact with the skin without health risks. Three types of handles in 2 colors are available:

- **anti-slip** handle with a **rough surface** type **H** **black / khaki** color
Its design significantly decreases possibility of the baton being yanked from the hand and gives the user a comfortable certitude.
- **ergonomic** type **HE** **black / khaki** color
This handle has an ergonomic shape with a **pleasant smooth** surface.
- **smooth leather-imitation** type **ExB-21HL** **black** color

anti-slip handle – type “H”



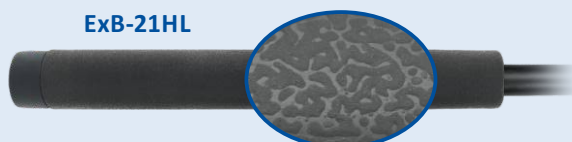
ergonomic handle – type “HE”



anti-slip handle in khaki color – type “H”



ExB-21HL



Type	Length (expanded) *	Type of handle	Designation of the baton		Surface treatment	Length (closed)	Weight
			in set with the holder	without holder			
Friction Lock	16" 405 mm	anti-slip	ExB-16H holder BH-54	ExBO-16H	black / chrome	6,7" 170 mm	340 g
		ergonomic	ExB-16HE holder BH-54	ExBO-16HE			
	18" 450 mm	anti-slip	ExB-18H holder BH-54	ExBO-18H	black / chrome	7,1" 180 mm	370 g
		ergonomic	ExB-18HE holder BH-54	ExBO-18HE			
	21" 530 mm	anti-slip	ExB-21H holder BH-54	ExBO-21H	black / chrome	8,3" 210 mm	440 g
		ergonomic	ExB-21HE holder BH-54	ExBO-21HE			
		leather-imitation	ExB-21HL holder BH-54-HL	ExBO-21HL			
	23" 585 mm	anti-slip	ExB-23H holder BH-55	ExBO-23H	black / chrome	9,0" 230 mm	500 g
		ergonomic	ExB-23HE holder BH-55	ExBO-23HE			
	26" 660 mm	anti-slip	ExB-26H holder BH-55	ExBO-26H	black / chrome	10,2" 260 mm	540 g
		ergonomic	ExB-26HE holder BH-55	ExBO-26HE			



BH-54



* length tolerance:
-0,6" / +0,4" (-15,2 mm / +10,1 mm)

Swiveling holder supplied with hardened expandable batons:

ESP hardened batons can be supplied in a set with a **professional swiveling plastic holder with Quick Change System** (protected by a European patent).

Baton in this holder can be **rotated in the full range of 360 degrees** without the use of any tool (there are 16 possible fixed positions).

This holder enables **very quick drawing** of the baton just **with one hand** as there is almost no friction thanks to the automatic opening of the holder after the nylon strap is unfastened. Holder with unfastened nylon strap **enables carrying of expanded baton**.

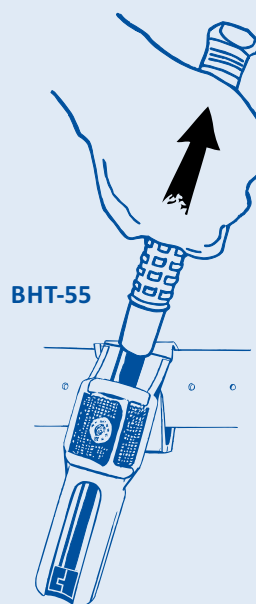
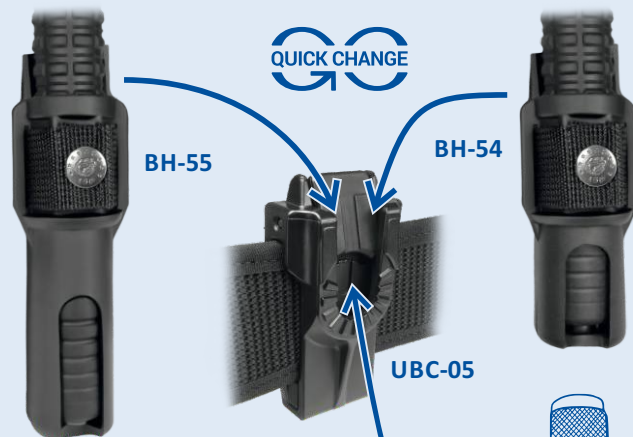
We deliver all types of our batons with a suitable holder:

- **BHT-55** Easy Lock batons
- **BH-54** 16", 18" and 21" Friction Lock batons
- **BH-54-HL** ExB-21HL baton with a leather-imitation grip
- **BH-55** 23" and 26" Friction Lock batons

The plastic holder **BHT-55** makes the **automatic extension of the telescopic tubes** possible when pulling out the baton. The tip of the baton remains caught in the holder and the baton starts to automatically extend. The baton will already be **fully extended when taken out** of its holder, which will **save time** in a critical situation.

If you don't find this method of extending the baton useful, you can **remove the holding base** from the bottom of the holder (by unscrewing the two screws on the back of the holder). The baton will now remain closed when taken out of the holder.

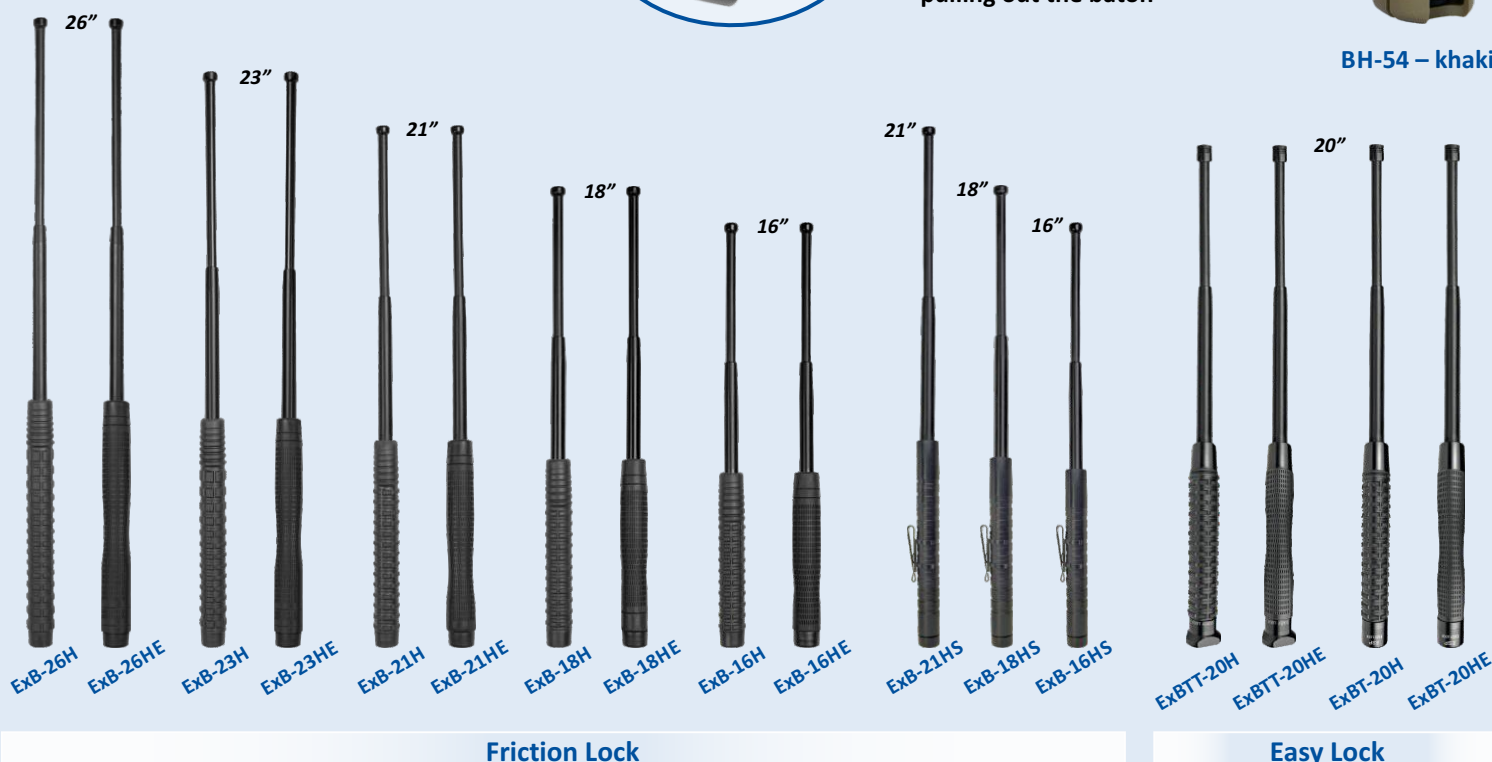
All types of holders are equipped with **UBC-05** belt clip (part of the Quick Change System) which enables the user to **quickly change** between different plastic and nylon ESP holders with rotation mechanism. The clip itself **remains fastened to the belt** – you only need to click on the holder of choice.



Holding base enables automatic extension of the telescopic tubes when pulling out the baton



BH-54 – khaki



Friction Lock

Easy Lock

ExB-16HS ExB-18HS ExB-21HS

Compact hardened expandable baton (Friction Lock)

This **compact metal** version of ESP telescopic baton is designed mainly for **concealed carry**. Thanks to its **significantly reduced dimensions** it is suitable for all kinds of armed and security personnel who **carry out their duties in civilian clothes**.

Unlike major competitive products the ESP product is made from **hardened steel**. The ending is hardened as well, providing the baton with maximum efficiency. You can use it even for the most demanding missions **in extreme conditions**.

The **transverse knurling** provides **firm and secure grasp** of the baton and ensures secure attachment of the metal **clip**. The clip can be freely **moved according to the user's need** or can be removed completely.

It is produced with a **black nickel-zinc** surface treatment (with good resistance against scratching) or with a **white chrome** surface treatment.

The baton **can be fitted with the entire ESP accessory line** which we offer but **with the exception of baton holders**. This baton is designed for free carry without a holder, using only the metal clip.



Type	Surface treatment	Length (closed)	Length (expanded) *	Weight
ExB-16HS	black / chrome	6,3" / 161 mm	16" / 405 mm	310 g
ExB-18HS	black / chrome	7,0" / 178 mm	18" / 450 mm	340 g
ExB-21HS	black / chrome	8,1" / 205 mm	21" / 530 mm	385 g

* length tolerance: -0,6" / +0,4" (-15,2 mm / +10,1 mm)

PROFESSIONAL USE OF ESP BATON – TRAINING COURSES

ESP training courses are based in **long-term valuable experience** in practical police training. They follow the current state-of-the-art trends in security forces training.

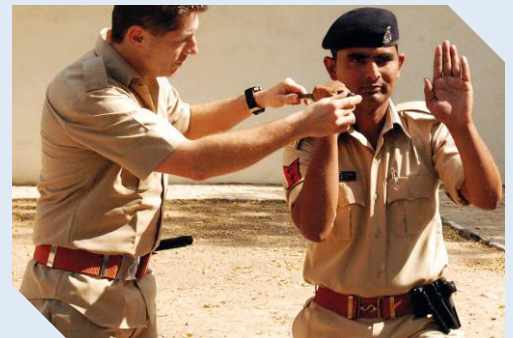
The courses are focused on integral training of a baton user and are designed for police officers, army forces and other units of law enforcement.



It is possible to **modify or extend contents** of the course after consultation to meet the specific requirements of a given unit.



www.esp-link.com/training-missions



NON-HARDENED EXPANDABLE BATONS

ExB-16N ExB-18N ExB-21N Non-hardened expandable baton

The **non-hardened baton** is recommended for **personal self-defense** and is **NOT DESIGNED** for professional use. It is produced with a **black nickel-zinc** surface treatment (with good resistance against scratching) or with a **white nickel** surface treatment.

They have top quality durable **rubber grip** with an original **anti-slip** surface. This surface significantly decreases possibility of the baton being yanked from the hand. A firm grasp of the baton gives the user a comfortable certainty.

Plastic holder, which is **included in the price** of baton, can be attached to a belt **by slipping the belt through the opening** in the holder. The holder was granted **European patent** and enables very quick drawing of the baton **just with one hand**. When the nylon strap is unfastened, the holder enables **carrying of expanded baton**.

Type	Surface treatment	Length (closed)	Length (expanded) *	Weight	Type of the holder (incl. in the price)
ExB-16N	black / nickel	6,7" / 170 mm	16" / 405 mm	340 g	BH-02
ExB-18N	black / nickel	7,1" / 180 mm	18" / 450 mm	370 g	BH-02
ExB-21N	black / nickel	8,3" / 210 mm	21" / 530 mm	440 g	BH-02

* length tolerance: -0,6" / +0,4" (-15,2 mm / +10,1 mm)

BH-02



CARRYING EXPANDABLE BATONS

BHU-x4 BHU-x5 Plastic holder for expandable baton

This holder is designated for **professional use**. The unique construction of the holder facilitates **very quick drawing** of the baton by tilting it out **with one hand**.

It also includes a **safety lock** which prevents the unexpected dropping of the baton. The holder is made from **highly resistant plastic**.

The holder makes it possible to insert an **expanded baton** into the holder when the user needs to free his or her hand for another activity.



safety lock of the BHU holder



BHU-14

BHU-x5



BH-04

BH-14

BH-54
khaki

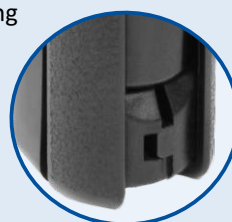
BH-x4 BH-x5 BHT-x5 Plastic holder for expandable baton

This holder is designated for **professional use**. It is made from **highly resistant plastic**. This plastic holder was granted European patent.

It enables **very quick drawing** of the baton **just with one hand** as there is almost no friction when the nylon strap is unfastened and the holder automatically opens. When the nylon strap is unfastened, the holder enables **carrying of expanded baton**.

BHT-x5: This type of holder is designated **solely for Easy Lock** expandable batons. It makes the **automatic extension of the telescopic tubes** possible when pulling out the baton. The tip of the baton remains caught in the holder and the baton starts to automatically extend. The baton will already be **fully extended when taken out** of its holder, which will **save time** in a critical situation. If you don't find this method of extending the baton useful, you can **remove the holding base** from the bottom of the holder (by unscrewing the two screws on the back of the holder).

This holder is available in colors:






Holding base of the BHT holder



BHT-55

BH-65

Designation of the holder for batons:

Easy Lock 20" and Friction Lock:		Friction Lock:		Easy Lock	Type of the fixation clip	Rotation (360°)
16", 18", 21"	21", 23", 26"	16", 18", 21"	21", 23", 26"			
BHU-04	BHU-05	BH-04	BH-05	BHT-05	UBC-01 belt clip	●
BHU-14	BHU-15	BH-14	BH-15	BHT-15	UBC-02 belt clip	●
BHU-24	BHU-25	BH-24	BH-25	BHT-25	paddle	●
BHU-34	BHU-35	BH-34	BH-35	BHT-35	UBC-03 belt clip	●
BHU-44	BHU-45	BH-44	BH-45	BHT-45	UBC-04 MOLLE clip	●
BHU-54	BHU-55	BH-54	BH-55	BHT-55	UBC-05 belt clip 	●
—	—	BH-64	BH-65	—	metal clip	—
BHU-74	BHU-75	BH-74	BH-75	BHT-75	UBC-07 MOLLE clip 	●
BHU-84	BHU-85	BH-84	BH-85	BHT-85	UBC-08 belt clip 	●



more information on the clips on pages 2–5 and on the flap



SH-x21 Plastic holder for Friction Lock expandable baton

This plastic holder has been designed for **professional use**. Thanks to its unique **construction** it enables very quick drawing of the baton. The holder enables **carrying of expanded baton**.

for lengths of Friction Lock batons **16"**, **18"** or **21"**

Designation of the holder	Type of the fixation clip	Rotation (360°)
SH-021	UBC-01 belt clip	●
SH-121	UBC-02 belt clip	●
SH-221	paddle	●
SH-321	UBC-03 belt clip	●
SH-421	UBC-04 MOLLE clip	●
SH-521	UBC-05 belt clip 	●
SH-821	UBC-08 belt clip 	●



more information on
the clips on pages 2-5
and on the flap



SH-021



SH-121



SH-221

BH-02 BH-03 Plastic holder for expandable baton

This plastic holder can be attached to a belt **by slipping the belt through the opening** in the holder (the holder has no plastic belt clip). The holder was granted **European patent** and enables:

- very quick drawing of the baton **just with one hand** as there is almost no friction when the nylon strap is unfastened and the holder automatically opens,
- possibility of modifying the size of the hole for belt and the inclination of the holder by cutting the plastic dividers,
- when the nylon strap is unfastened, the holder enables **carrying of expanded baton**.

for lengths of batons **16"**, **18"** or **21"** **BH-02**
for lengths of batons **21"**, **23"** or **26"** **BH-03**



BH-02



BH-03

BC-01 Metal clip for concealed carrying of hardened expandable baton

This metal clip can be easily attached to the expandable baton, enabling its **concealed carry**-ing on the belt outside or inside trousers or on a tactical vest.

This clip is designed for use with ESP hardened expandable batons with a rubber grip only. The clip is not designed for being removed from the baton and put back on repeatedly.



BC-01

Additional hand strap for expandable baton

We can supply an additional hand strap for expandable batons. The strap can be easily inserted **under the screw-on baton ending**. The baton can be thus used with or without the hand strap as needed.

AH-01



AH-01 Multi-functional handle for baton accessories

This multi-functional handle makes it possible to **use numerous accessories** for expandable baton in case you don't own the expandable baton at this moment or you are not for some reason able to use it. Combining this handle with various accessories makes it possible to create very easily and quickly a **whole range of tools** suitable for example for motorists or rescue teams.

The handle has **the same thread at both ends**, which enables mounting of the whole series of accessories, such as the additional flash-light **BL-01** / **BL-02** / **BL-03**, shovel **BS-01**, crowbar **BCB-01**, small crowbar **BE-03** or the ending with a hidden spike **BE-04** / **BE-05**.

It can also be used as the second handle for the bolt cutter **BCT-01**. Length 430 mm, weight 486 g.

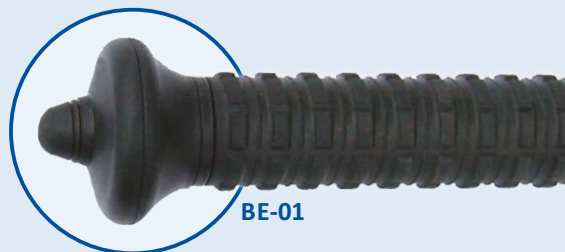
ACCESSORIES FOR EXPANDABLE BATONS

BE-01 Baton ending with a jut

This ending greatly **increases the certainty of hold** on the baton. The **widened part** of the ending **prevents the hand from slipping** from the baton handle.

Thanks to a **curved jut** you can hit the adversary **with the other side** of baton. This is advantageous in situations where confined space makes it impossible to fully open the baton and use it. The jut can also be used to **strike the vital points** of the aggressor.

The ending is made from **durable silicone** with excellent resilience and resistance against graying. Diameter of the widened part 43 mm. Weight 70 g.



BE-01

BE-02 Baton hardened steel ending

Baton ending made of **hardened steel**, which makes it possible to use the baton as an **impact tool**, e.g. for breaking of windows or as an improvised hammer.



BE-02



BE-03 Baton ending with a small crowbar

Baton ending in the form of a **small crowbar** is designated particularly for use by police and rescue teams.

In this manner it is possible to very quickly create an alternative tool in emergency situations. It can be used for **prying open locks and latches**. Its end part can be used as a hammer. Dimensions: 80 × 28 mm. Weight 215 g.



BE-03

BE-04 BE-05 Baton ending with a glass breaker

This silicone ending with a **hidden spike** is useful especially in emergency cases **for the destruction of obstacles made of glass**, for example during car accidents or police interventions. The ending is designated primarily for armed forces and rescue units, but also for ordinary drivers as an emergency tool for escaping from a vehicle in the case of an accident.

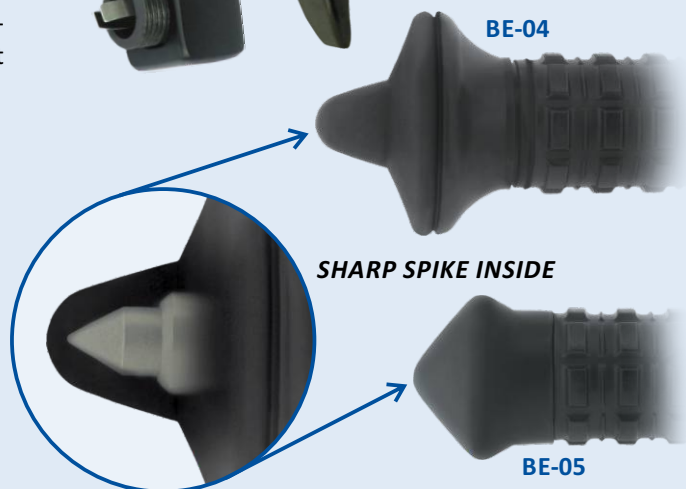
The special **hard and highly resistant** spike (tungsten carbide) is **safely hidden** in the ending right beneath the silicone surface. It **reliably shatters glass** even when limited force is applied.

BE-04: The **extended rubber part** of the ending improves grasp of the baton, prevents the hand from slipping and partially protects it against possible glass shard injury.

BE-05: This is a **more compact version** of the BE-04 ending.

Baton endings listed above are supplied separately as an accessory or upon request mounted on an expandable baton (except **BE-03** ending).

These endings can be easily mounted on the baton after unscrewing its original ending.



SHARP SPIKE INSIDE

BE-05



BL-01 BL-02 Flashlight for expandable baton

- Can be used also independently as pocket light
- Burn time is up to **210 hours** for the type **BL-01**, up to **60 hours** for the type **BL-02**
- High luminous intensity thanks to **3 LED diodes**
- Power supply: **6 pcs** of lithium battery of the type **CR 2032** for the type **BL-01**, **2 pcs** for the type **BL-02**
- Waterproof duralumin body | Front glass made of **polycarbonate**
- **Service life** of LED diodes is **100 000 hours**
- Locking of end position (ON – OFF)



BL-01



BL-02



BL-03 Tactical flashlight for expandable baton

The ESP expandable baton can be equipped with this tactical flashlight which greatly broadens the possibilities of the baton's use. The **innovative Cree LED chip with 5W performance** ensures the **luminosity of up to 350 lm**. The flashlight is **waterproof** (it can be submerged in shallow water) and it can withstand rough handling.

The flashlight comprises an electronic module, which enables **4 modes** of lighting: **100 % / stroboscope / 50 % / 10 %**. You can switch between modes by turning the body of the flashlight the same way as when switching the flashlight on. After a longer break (more than approx. 2 seconds) the flashlight returns to the mode of full output.

The flashlight can be also used without the expandable baton as a **common pocket flashlight**. The metal ring on the flashlight ending can be used to easily attach it to your gear or to your keyring. The flashlight is switched on by rotating the front part while the baton or the flashlight ending remain fixed. The rubber ring with bumps **prevents the flashlight from rolling** on a flat surface.

The flashlight is powered by a **18350 type battery** which **can be charged** in the **adapter with integrated USB cable**. The adapter can be connected to a **charger from a regular smartphone** (this charger is not part of the package) or the battery in the adapter can be charged **from a PC or a laptop**.

The flashlight can also be powered by the non-rechargeable battery **CR 123A** in combination with the plastic insert which compensates for the smaller diameter of the battery. This can be very useful as a back-up power source.

The flashlight is made from **highly resistant duralumin**. The front glass is made of **polycarbonate**.

The flashlight length is 112 mm, the head diameter is 30 mm, the weight is 152 g (incl. battery). The flashlight attached to the baton lengthens its handle by 72 mm.

The package includes:

- BL-03 flashlight | 18350 battery
- charging adapter with integrated USB cable
- plastic insert for the CR 123A battery



The adapter can be connected to a charger from a regular smartphone

BLH-01 BLH-02 Nylon holder for baton flashlight

Nylon holder suitable for baton flashlight of the type **BL-01 / BL-02** (BLH-01) or **BL-03** (BLH-02) has a **Velcro seal**. It is equipped with a **metal clip**, which enables its **rapid attachment** to a belt (without the necessity of unbuckling it) or to a tactical vest.



BLH-01

BNS-01 BNS-02 BNS-03 Night police set for expandable baton

Flashlights for expandable batons make it possible to create a **"Night police set for baton"** consisting of red plastic signal cone, **BL-01, BL-02** or **BL-03** flashlight and the nylon pouch **BLH-01** or **BLH-02**.

The main advantage of this solution is the fact that the signal cone **does not take any extra space** in the pouch when the flashlight is inserted into it. At the same time it strengthens the pouch and thus **increases the protection** of the flashlight.

The cone is open at its top, which enables normal use of the flashlight for lighting with white light without the necessity of removing the cone (useful for checking personal documents, the interior of a vehicle, etc.). An excellent tool, not only for traffic police.



BNS-01



BNS-02

BM-02 BM-03 Tactical mirror for expandable baton

Expandable batons can be fitted with tactical mirrors of **two sizes**. These mirrors will enable you to for example check for the presence of an aggressor behind the corner or in the room you are about to enter. The mirror is equipped with a **clip for easy fitting** on the steel tube of the baton.

Type	Diameter of reflective surface	Weight
BM-02	71 mm / 2,80"	23 g
BM-03	92 mm / 3,62"	56 g



BMH Nylon holder for mirror

This nylon holder, which can be optionally supplied, protects the mirror against damage and enables its carrying on the belt.

It is equipped with a **metal clip**, which enables its **rapid attachment** to a belt (without the necessity of unbuckling it) or to a tactical vest.

BWB-01 Baton window breaker – special impact ending for expandable baton

Mounting of this ending on the baton is very quick and easy. It is designated for **forced entries** into objects and vehicles during police and rescue operations.

The head is made of high quality **hardened steel** and it is equipped with a plastic fixing centre.

Dimensions: $\varnothing 48 \times 56$ mm. Weight 235 g.



BWBH-01 Nylon holder for special impact ending

Nylon holder suitable for baton impact ending **BWB-01** has a **Velcro seal**. It is equipped with a **metal clip**, which enables its **rapid attachment** to a belt (without the necessity of unbuckling it) or to a tactical vest.



BCB-01 Crowbar for expandable baton

The crowbar is designated for use by police or rescue teams. It can be used for prying open locks and latches, removal of nails or for hammering. This crowbar can be easily mounted on the baton after unscrewing its original ending. In this manner it is possible to very quickly create an alternative tool in emergency situations.

The crowbar is equipped with side profiles, which serve for **breaking the inserts** of ordinary locks.

Dimensions: 170×48 mm. Weight 850 g.



BCBH-01 Nylon holder for the crowbar

This special nylon holder serves for storage of the crowbar for the baton **BCB-01**. The top flap equipped with **fixing Velcro straps** **protects the user** from the sharp edge of the crowbar during transport.

The back of the holder is equipped with **reinforced straps** and it is accommodated for placing the whole set both on a duty belt or a tactical vest with **MOLLE webbing**.

BCT-01 Bolt cutter for expandable baton

The bolt cutter for expandable baton represents a comparatively compact accessory, which can be easily placed on a service vest. When combined with two **expandable batons**, which can be easily at hand in an ordinary two-member patrol, or with two **multi-functional handles**, a fully operational bolt cutter can be created very quickly.

It solves the problem of having to carry a whole bolt cutter along which would be far too cumbersome. The bolt cutter serves as a helpful aid during many interventions, military or rescue actions. For example, it can help cut a passage through a high fence or to overcome an obstacle made of barbed wire.

The maximum diameter of non-hardened wire it can cut is 6 mm. The weight without batons is 640 g, length 185 mm.



BCTH-01 Nylon holder for bolt cutter

This special nylon holder serves for storage of the bolt cutter for baton **BCT-01**. The top flap equipped with **fixing Velcro straps** **protects the user** from the sharp edge of the cutter during transport.

The back part of the holder is equipped with **reinforced straps** and it is accommodated for placing the whole set both on a duty belt or a tactical vest with **MOLLE webbing**.



BS-01 Shovel for expandable baton

It can be easily mounted on the baton after unscrewing its original ending. In this manner it is possible to very quickly create an alternative tool in emergency situations, which increases the possibilities of the ESP expandable baton.

This shovel was created for Army and Police Forces, rescue teams, but also for anybody who might happen to need to free a stuck car or for a camping enthusiast... The body of the shovel is made of **hardened steel**, edges of the shovel **are sharpened**.

The shovel can be mounted on the baton **in two locked positions**. Fully opened, it can be used like a normal shovel, spade or axe for cutting wood or clearing path through branches. When locked at right angle, it can be used as a hoe. Dimensions: 230 × 150 mm. Weight 720 g.



BSH-01 Nylon holder for the shovel

This special nylon holder serves for storage of the shovel for the baton **BS-01**. The top flap equipped with **fixing Velcro straps** **protects the user** from the sharp edge of the shovel during transport.

The back of the holder is equipped with reinforced straps and it is accommodated for placing the whole set both on a duty belt or a tactical vest with **MOLLE webbing**.



EQUIPMENT FOR TRAINING

TB-21 TB-26 Training baton

Training batons are available in two lengths – **TB-21** (21") and **TB-26** (26"). They are **highly wear resistant** and their dimensions **correspond to expandable batons** of the length 21" and 26".

- **TB-21**: length 550 mm, weight 422 g | **TB-26**: length 660 mm, weight 545 g

TBT-21 TBT-26 Thin training baton

This thin training baton is a more rigid variant of the ESP training baton type **TB-21** or **TB-26**. Thanks to its slimmer and **more rigid** execution it enables **training of various levers and fixations**, which usually form an integral part of training of the armed forces.

- **TBT-21**: length 550 mm, weight 354 g | **TBT-26**: length 660 mm, weight 404 g

TT-24 Training tonfa

We can supply this training tonfa along with our police tonfas so that it can be used for practice. Its dimensions correspond to the police tonfa of the type **TR-24/59**. Weight 676 g.

HTB-01 Holder for training baton or tonfa

The holder serves for **rapid fixation** of the training baton or tonfa during training when the instructor **needs to free his hands** for explanation of some training elements. It contains a reinforced plate with **Velcro hooks**.

TS-60-95 TS-50-70 Training shock-absorbing bag

These bags have been designed for the baton and tonfa **training use**. They absorb even very strong hits. The cover is made of **highly damage resistant** material. It can withstand not only hits of training batons or training tonfas, but also hits of **hardened steel batons**, police tonfas or standard batons.

Type	Width	Height	Depth	Weight
TS-60-95	600 mm	950 mm	100 mm	4,7 kg
TS-50-70	500 mm	700 mm	100 mm	2,9 kg

Training DVD Expandable baton in practice

This training DVD very illustratively explains the basic principles and elements of the **use of the expandable baton** and its accessories. It contains **16 chapters**, duration of film is **59 minutes**.

TRAINING TORNADO / JET / TYPHOON

Training defensive spray

Spray flashlight **TORNADO 63 ml**, defensive spray **POLICE JET 63 ml** and **TYPHOON** can also be supplied as a **training version** (containing harmless inert gas only). Spray cannot be refilled again.

TB-21

TBT-26

TT-24

HTB-01

TS-60-95

TS-50-70



TK-01 TKO-01 TK-02 TKO-02 Training knife

We produce plastic training knives in the form of a **dagger (TK-01)** or an ordinary **pocket knife (TK-02)**. It serves for special defense training, as well as for the realization of model situations.

They are manufactured in two variants of stiffness. The **stiffer version** is marked as **H (hard)**, and **softer version** is marked as **S (soft)**. They serve for different levels of training.

Designation of the knife	Stiffness	Color	Length	Weight
TK-01-H	stiffer	black	290 mm	96 g
TK-01-S	softer			101 g
TKO-01-H	stiffer	orange		96 g
TKO-01-S	softer			101 g
TK-02-H	stiffer	black	220 mm	86 g
TK-02-S	softer			91 g
TKO-02-H	stiffer	orange		86 g
TKO-02-S	softer			91 g



TW-GLO TW-WAL Training pistol

Training silicone pistol **Glock 17 / Walther P99Q** is designated for the safest possible training of self-defense techniques using the pistol or techniques using hits with the pistol.

The material and design not only **considerably reduce the danger of injury** during contact training, but they also prevent damage of wooden floor or training mats. **Signal orange color** easily distinguishes it from a real gun. **The edges are smoothed** in order to prevent injuries during contact.

The barrel is **reinforced** with a steel tube, which is safely hidden inside the silicone body of the pistol. This reinforcement prevents bending of the pistol and it gives it a better impression of a real gun.

- **TW-GLO**: weight 430 g | **TW-WAL**: weight 400 g



STANDARD POLICE BATONS | TONFAS

The batons are made from durable **polypropylene**. Although they are comparatively lightweight, they are **highly resistant to fracture**. The batons can be supplied either **with or without wrist strap**. It is also possible to choose the **PBS version with a protective shield**, which protects the hand against blows. These plastic batons have received a **quality certificate** issued by testing laboratory at ITC Zlín, Czech Republic.

Lengths: **17"** / 43 cm | **19"** / 48 cm | **21"** / 53 cm | **23"** / 58 cm | **25"** / 63 cm | **27"** / 68 cm | **29"** / 73 cm | **31"** / 78 cm | **34"** / 86 cm



ExT-20/52 ExT-24/61 Expandable tonfa

Expandable tonfa is made of **high-quality duralumin** (type 6061). Hardened duralumin ensures **high strength, toughness** and resistance to oxidation (even in salt water).

It is **very compact when closed** and does not obstruct your movements. In case of need it can be **drawn out very quickly** to its full length.

- **ExT-20/52**: length 20" / 52 cm, weight 850 ± 20 g | **ExT-24/61**: length 24" / 61 cm, weight 925 ± 20 g



TR-24/59 TF-24/59 Police tonfa

This tonfa was developed **in cooperation with police experts** and it is designated especially for **professional use** by police units and security agencies. The tonfas have received a **quality certificate** issued by testing laboratory at ITC Zlín, Czech Republic.

The tonfa is made of **highly resistant polypropylene** and has many improved features, which increase the confidence of the police officer in his or her self-defense (quality of grip, firmness, etc).

Type **TR-24/59** is the standard **round tonfa**. Type **TF-24/59** has a special flat **surface protecting the hand** against a strike and during self-defense it helps spread the hitting power to a larger area.

- Diameter: 31–32 mm • Diameter of the side handle: 28–31 mm • Length of the side handle: 125 mm



TR-24/59-PC Polycarbonate police tonfa

This police tonfa is designated mainly for **professional use** by police forces and security agencies. The tonfa is made of high quality and high strength **polycarbonate**.

Type **TR-24/59-PC** is the standard **round tonfa**.

Type	Length	Weight
TR-24/59	23,2" / 59 cm	460 g
TF-24/59	23,2" / 59 cm	510 g
TR-24/59-PC	23,2" / 59 cm	610 g



Holders for TF tonfas





Holders for TR tonfas, ExT expandable tonfas and PB / PBS police batons



TH-x4-E TH-x4-C Plastic holder for expandable or standard tonfa

Plastic holder for **expandable (-E)** or **standard tonfa (-C)** is designated for **professional use**. It contains a **safety lock**, which prevents movement and spontaneous release of tonfa from the holder. Tonfa in the holder can be carried on the left or on the right side.

Designation of the holder for:

expandable tonfa	standard tonfa	Type of the fixation clip	Rotation (360°)
TH-04-E	TH-04-C	UBC-01 belt clip	•
TH-14-E	TH-14-C	UBC-02 belt clip	•
TH-24-E	TH-24-C	paddle	•
TH-34-E	TH-34-C	UBC-03 belt clip	•
TH-54-E	TH-54-C	UBC-05 belt clip 	•
TH-64-E	TH-64-C	metal clip	—
TH-84-E	TH-84-C	UBC-08 belt clip 	•



more information on the clips on pages 2–5 and on the flap



RESCUE KNIVES

We developed this **universal tool** based on the requests of members of security forces – it is a knife for rescue workers, police officers and soldiers as well as for everyday carrying (EDC). The knife boasts a unique shape and construction as it unites the tried and tested **cutter of ESP disposable handcuffs and seat belts** with the reliable **glass breaker**.



Blade

The knife's blade is made of quality **cutlery steel type AUS-8** and comes in matte titanium gray color. The **PVD surface treatment** **significantly increases the blade's resistance** against wear and corrosion. The reliable **liner lock** type safeguard can be unlocked with the thumb.

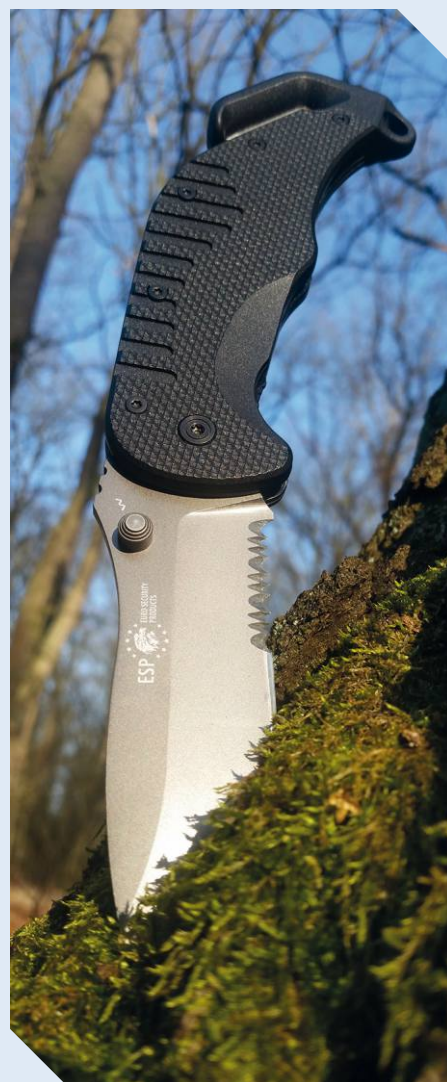
Handle and the metal clip

The knife's handle is **ergonomically shaped** and comfortably fits the user's hand. The knife presents an **innovative solution of the metal clip**, which is **partially embedded in the handle** and does not form a protrusion. Thanks to this, the handle fits both right-handed and left-handed users excellently. The knife's unique construction is protected by a European Community Design.

The fine pattern on the surface of the haft prevents the knife from slipping from the user's hand. The handle is made from **resistant PA 66 polyamide**, ensuring it can truly withstand a lot. The material is **certified** for long-term contact with the skin without health risks. The knife can be attached to the gear or to a key chain thanks to a handy **ring**.

Glass breaker

The knife is also equipped with a **glass breaker**, which contains a **tip made of tungsten carbide**. Thanks to this enhancement, only a **milder strike** suffices to **reliably break glass**, such as a car window. The breaking tip is also not too sharp, so the user cannot be accidentally injured during regular manipulation.



Cutter

The **multipurpose cutter** on the knife's handle can easily cut **car seat belts, clothing** when administering first aid as well as **ESP textile handcuffs**. Thanks to its specially designed shape, the cutter can be easily inserted beneath the clothes while its embedded blade minimizes the risk of injury.



Handle color

We manufacture the knife with 3 colors of handle:

- black **RK**
- khaki **RKK**
- yellow **RKY**

Blade shapes

There are 3 variants of the blade available:

- smooth blade **RK-01** • **RKK-01** • **RKY-01**
- combi blade **RK-01-S** • **RKK-01-S** • **RKY-01-S**

Combine blade with a partially serrated edge facilitates **faster cutting of ropes** as it prevents the knife from **getting stuck**.

- rounded blade with a hook **RK-02** • **RKK-02** • **RKY-02**

Thanks to the **rounded blade tip** the knife cannot be used to stab and thus **cannot cause stab wounds**.

This may be required when performing certain specific duties (rescue workers, prison guards). The hook with the cutting edge and the serrated part of the blade enable quicker cutting of ropes as they prevent the blade from catching.



Dimensions

- Blade width **3 mm**
- Length of the handle **133 mm**
- Handle width **13 mm** (incl. the metal clip: 16–18 mm)



www.esp-link.com/rescue-knife

Type of blade	Type	Handle color	Length of the open knife	Blade length	Blade length (from the tip to the handle)	Length of the serrated part	Weight
smooth	RK-01	black	221 mm	100 mm	89 mm	–	164 g
	RKK-01	khaki					
	RKY-01	yellow					
partially serrated (combi)	RK-01-S	black	221 mm	100 mm	89 mm	26 mm	164 g
	RKK-01-S	khaki					
	RKY-01-S	yellow					
rounded, with a hook	RK-02	black	217 mm	95 mm	84 mm	37 mm	168 g
	RKK-02	khaki					
	RKY-02	yellow					



RKH-01 Nylon holder for ESP Rescue Knife

This holder is designed for carrying all types of ESP Rescue Knife. It is made of highly resistant and light nylon.

Tiltable flap is equipped with fixing **Velcro straps** and a **snap fastener**.

Flexible **metal clip**, which is located on the back side of the holder, enables its rapid insertion on a belt (without the necessity of unbuckling it). Thanks to this clip the holder can be attached also to a tactical vest.



RKHL-01 Leather holder for ESP Rescue Knife

This holder for ESP Rescue Knife has been **hand-crafted** from **quality cow hide**. This type of hide is very solid and perfectly resists any damage or moisture. This holder is suitable for all types of ESP Rescue Knife.

Tiltable flap equipped with a **snap fastener** prevents loss of the knife. And in case of necessity, it enables **quick pulling out of the knife with one hand only**. Holder weighs 76 g.

Flexible **metal clip**, which is located on the back side of the holder, enables its rapid insertion on a belt (without the necessity of unbuckling it). Thanks to this clip the holder can be attached also to a tactical vest.



Laser engraving

Laser engraving turns the ESP Rescue Knife into an **original, personal item**. We can engrave it with a text or an image – for instance a **company logo**. The knife then becomes the **perfect present** for employees as well as business partners. Police and other armed units can have the knife engraved with their **official symbols**.

The short text can be engraved into the **top part of the blade** or on the **belt clip** to **remain legible on a closed knife**. Text height is approximately 8 mm and the ideal length is 1–3 words. It can for example be a service number or a personal dedication. If you're interested, do not hesitate to contact us with your ideas and we will figure it out.

Laser engraving is **permanent** (it can be removed only by very brute force which irreparably damages the blade). The engraving is glossy silver against the dark grey blade.



TRK-01 Training ESP Rescue Knife

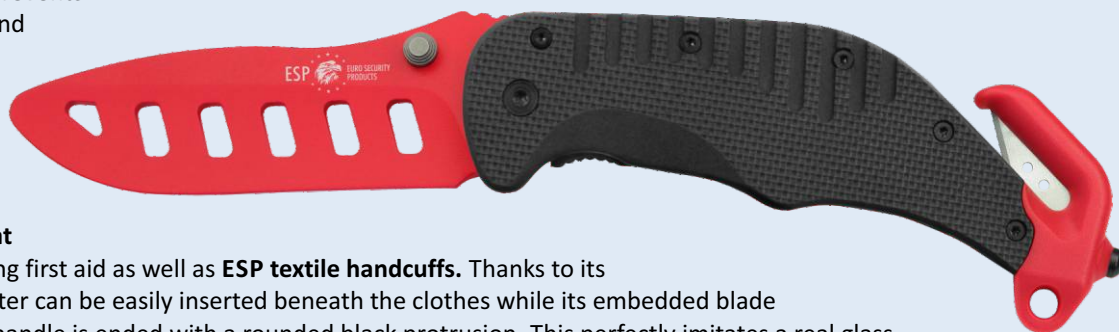
This training knife is a **dummy version of the ESP Service and Rescue Knife**. It is meant for training of safe drawing of the knife as well as various self-defense moves and techniques. Thanks to the used material and the shape of the blade with several cutouts this training tool has **approximately the same weight and balance** as the real knife.

Rounded edges, the absence of a blade and a sufficient blade width ensure knife training that is **as realistic as possible** while also being **completely safe**. The **bright red blade color** also allows you to immediately recognize whether this is the training tool or the actual rescue knife.

This training knife's handle is completely identical to the real ESP Rescue Knife. It is made from **resistant PA 66 polyamide**, ensuring it can **truly withstand a lot**. Its ergonomic shape **fits nicely into the palm** and is suitable both for right-handed and left-handed users. The fine pattern on the handle's surface **prevents the knife from slipping out of hand** even during rigorous training.

This knife is not useful only in training but in everyday life as well. It contains a **functional multipurpose cutter** on the handle. You can easily cut **car seat**

belts, clothing when administering first aid as well as **ESP textile handcuffs**. Thanks to its specially designed shape, the cutter can be easily inserted beneath the clothes while its embedded blade minimizes the risk of injury. The handle is ended with a rounded black protrusion. This perfectly imitates a real glass-breaking tip while maintaining maximum safety during training. The knife can be attached to the gear or to a key chain thanks to a handy **ring**.



The knife presents an **innovative solution of the metal clip**, which is **partially embedded in the handle** and does not form a protrusion. The knife's unique construction is protected by a European Community Design.

Weight: 160 g.

SPRAY FLASHLIGHTS – PEPPER SPRAY WITH LED LIGHT

TORNADO represents a completely **new category of defensive sprays**, which at present has no equivalent on the market with defensive sprays. A super-bright flashlight with white LED diode was added to the standard defensive spray. Most of critical situations during which people defend themselves by defensive sprays take place in darkness.

It is impractical to hold a flashlight in one hand and a spray in the other. Moreover it is quite problematic to coordinate movements of both hands during critical situations. At the same time it is necessary to aim the spray precisely at the attacker's face and flashlight should therefore light the place where irritating gas should hit the adversary.

Our spray flashlights now make it possible to handle both flashlight and the spray **with one hand only** and to have the other hand free for better self-defense. The beam of light enables **precise aiming** at the target. The ESP company has contributed to the increase of the general level of self-defense by this significant innovation.

Features of all TORNADO spray flashlights:

Special head with **super-bright LED diode** is mounted on a standard spray can. The covering cap, which prevents any unwanted shot of spray, contains two batteries CR 2032 and it serves at the same time also as a light switch. It is possible to use this spray flashlight in darkness **as an ordinary flashlight**. In case of danger you can immediately defend yourself just by pushing the button. The intense spotlight lights the aggressor's face and **blinds him**.

The system of head equipped with a LED flashlight has already been **patented** in the USA. The spray is sprayed out in the form of **JET**, that's why it is less susceptible to dispersion by possible mild wind. **Shooting range is up to 6 m.**



POLICE TORNADO (SFL-01) – for professional use

This spray flashlight contains **Oleoresin Capsicum – 15% OC**. Chemical composition of the **non-flammable content** of the spray meets the requirements for pepper sprays **used by police forces (certificate according to the German standard)**, such as the guaranteed interval of working temperature from -20 °C to +50 °C, harmlessness, etc. Content of the spray can is manufactured by a renowned German company and its composition is identical to that used by the German police.

POLICE TORNADO 360° (SFL-01-45-360) – can be used in any position

Unlike the standard spray flashlights **SFL-01 POLICE TORNADO**, this version can spray **in any position**, i.e. even in the **upside down position**. Dimensions of the container correspond to **POLICE TORNADO 63 ml**, but its volume is only **45 ml**. All other parameters are identical. It is not continuously in stock and it is **supplied only for orders of at least 100 pieces**.



K.O. TORNADO (SFL-01.1)

This spray flashlight contains **non-flammable** solution of **Oleoresin Capsicum – 10% OC**.



Training version – TORNADO

Spray flashlight **TORNADO** is supplied also as a **training version** (containing harmless inert gas only) for training purposes. Spray cannot be refilled again.

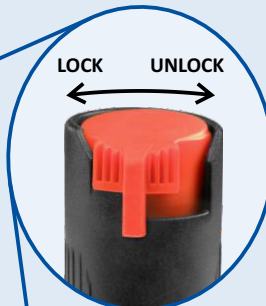
	Designation of the spray flashlight	Volume	Diameter of the spray can	Height	Weight
POLICE TORNADO	SFL-01-40	40 ml	35 mm	105 mm	98 g
	SFL-01-50	50 ml	35 mm	128 mm	110 g
	SFL-01-63	63 ml	35 mm	137 mm	124 g
	SFL-01-100	100 ml	40 mm	165 mm	165 g
	SFL-01-45-360	45 ml	35 mm	137 mm	110 g
K.O. TORNADO	SFL-01.1-40	40 ml	35 mm	105 mm	98 g
	SFL-01.1-50	50 ml	35 mm	128 mm	110 g

HURRICANE FLASHLIGHT (SFL-02) Spray flashlight

This spray flashlight is based on the defensive spray of the type **HURRICANE** (see below). The miniature addition contains a complete flashlight with 4 batteries AG5 and a rubber sleeve. It is available in many color variations using black, yellow and pink colors. There is one for everyone.

Thanks to its dimensions, spray flashlight HURRICANE FLASHLIGHT is **ideal for women**, as it takes only little space in a handbag. It can be an invaluable aid when they are in potentially dangerous surroundings. When the spray can is emptied, the light module can be simply mounted on a spare can. The model **SFL-02-C** / **SFL-02-PC** is equipped with **metal clip** for fixing on a belt, etc.

- Height 87 mm
- Weight 54 g (without clip)



safety lock



SFL-02-PC

PEPPER SPRAYS

HURRICANE Pepper spray 15 ml

Pepper spray with volume of **15 ml** contains **Oleoresin Capsicum (10% OC)**. The spray is sprayed out in the form of **JET**, that's why it is less susceptible to dispersion by possible mild wind. Suitable for **ladies' handbags**.

It enables approx. 20 short jet shots at the **distance of 3 m**. Diameter of the can is 22 mm, height 87 mm, weight 32 g.



Retractable holder (roller) for the HURRICANE self-defense spray

This holder with a **retractable string** facilitates comfortable carrying of the **HURRICANE** spray, making it always readily available. It can be attached to **almost anything** thanks to the **metal snap-hook** and **clip** on its back – to your clothes, to your bag or to your purse.

The spray will not get lost among other items and will always be in the same spot from which you can immediately take it and use it in the case of an emergency. An ideal solution for your sport activities or walking in the city.

It's almost impossible to lose the spray with this holder. If you accidentally drop the spray, the retractable mechanism **will return it** to its original place. The string can be extended up to the **length of 95 cm**.

It is also possible to use the holder **with sprays of different brands** with the can diameter of 22 mm. The holder is not designed for frequent removals of the spray but in the case of need, it is possible to remove the spray can from the holder using appropriate force.



POLICE JET Pepper spray 40 ml / 50 ml / 63 ml / 100 ml

Non-flammable pepper spray in volume of **40 ml, 50 ml, 63 ml** or **100 ml**. The spray head is equipped with a **cover lid** which prevents unwanted release of the spray. This pepper spray contains **Oleoresin Capsicum – 15% OC**.

Chemical composition of the **non-flammable content** of the spray meets the requirements for pepper sprays **used by police forces (certificate according to the German standard)**, such as the guaranteed interval of working temperature from -20 °C to +50 °C, harmlessness, etc. Content of the spray can is manufactured by a renowned German company and its composition is identical to that used by the German police.

The spray is sprayed out in the form of **JET**, that's why it is less susceptible to dispersion by possible mild wind. **Shooting range is up to 6 m**. Spray cannot be refilled.



40 ml



50 ml



63 ml

Volume	Diameter of the spray can	Height	Weight
40 ml	35 mm	100 mm	83 g
50 ml	35 mm	123 mm	94 g
63 ml	35 mm	132 mm	108 g
100 ml	40 mm	160 mm	149 g

PEPPER JET Pepper spray 40 ml / 50 ml

Non-flammable pepper spray in volume of **40 ml** or **50 ml** contains **Oleoresin Capsicum (10% OC)**. The spray is sprayed out in the form of **JET**, that's why it is less susceptible to dispersion by possible mild wind.

Shooting range is up to 4 m. Spray cannot be refilled again. Made in Germany.

Volume	Diameter of the spray can	Height	Weight
40 ml	35 mm	92 mm	66 g
50 ml	35 mm	108 mm	72 g



Real test of our pepper sprays



40 ml

50 ml



ESP FOG Pepper spray 50 ml – FOG

Pepper spray with volume of **50 ml** contains **Oleoresin Capsicum (10% OC)**. The spray is sprayed out in the form of **FOG**. It does not require exact aiming as it creates a cloud, but it is susceptible to dispersion by wind. **Active range of spray approx. 3 m.** Spray cannot be refilled again. Made in Germany.

- Diameter of the can: 35 mm
- Height: 108 mm
- Weight: 56 g



TYPHOON Pepper spray 400 ml

Professional, highly efficient pepper spray with volume of **400 ml** and with **reach up to 5–6 m** contains concentrated Oleoresin Capsicum (OC). The spray is sprayed out in the form of **JET**, that's why it is less susceptible to dispersion by possible mild wind.

Thanks to its volume it is designated particularly **for use at special actions against several attackers**, such as riots or rampage of soccer fans. Pepper spray meets the highest safety standards. Working temperature is within the interval from -20 to +50 °C. Spray cannot be refilled again. Made in Germany.

- Diameter of the can: 64 mm
- Height: 256 mm
- Width: 140 mm (at the place of handle)
- Weight: 571 g



SHTY-01 Nylon holder for TYPHOON pepper spray

For comfortable carrying of the **TYPHOON** spray, we offer a **thigh holster** produced from durable quality **nylon**. The holster can be **attached to a belt** (without the necessity of unbuckling the belt) with a loop with Velcro. Another strap with Velcro can be used to **fixate the holster to your thigh**. Thanks to this solution the holster is kept steady while **not interfering in your movements** or any demanding tasks. To prevent loss and any unwanted use of the spray, there is a **Velcro flap** which also ensures quick drawing of the spray and its immediate use. It is possible to carry other types of 400ml self-defense sprays in the holster.

SHTY-01

EHS-02 Decontamination first-aid spray

Unique system for **rapid and sterile cleaning and calming of the eyes** after application of pepper sprays and sprays with irritating substances. This decontamination spray with volume of **200 ml** can be of course used also to treat normal eye or skin irritation, as well as for surface cleaning of dirty wounds.

It may be applied from **any angle – 360°** (even horizontally or upside down). It will be handy particularly in security units which use defensive sprays. It can, however, find its place also in the medicine cabinet at home, as first aid for eye or skin irritation. Spray cannot be refilled again.

- Diameter of the can: 52 mm
- Height: 200 mm
- Weight: 261 g



CARRYING DEFENSIVE SPRAYS

SHT-x4 Plastic holder for spray flashlight TORNADO

This plastic holder is designated for **professional use**. It enables **very fast drawing** of the spray **sideways** from the holder. Moreover, it contains a **safety catch**, which holds the spray head firmly in the holder and at the same time prevents accidental opening of the lid.

In case of the spray flashlight **TORNADO** the safety catch thus prevents undesirable lighting or, when the opposite effect is desired, it makes it possible to **fix the spray lid in the lighted position** and thus use the **TORNADO** spray as an improvised flashlight.

In vertical or slightly inclined position it can be used for **permanent lighting** of space in front of the user, leaving his hands remain free.

SHU-44-50.63

SHU-x4 Universal plastic holder for other defensive spray

This plastic holder is designated for **professional use**. It enables **very fast drawing** of the spray **sideways** from the holder. Moreover, it contains a **safety catch**, which holds the spray head firmly in the holder.



Many types of pepper sprays of different brands and shapes of head fit our **SHU** and **SHUN** holders. You can find some examples on the next page.

SHUN-x4 Universal plastic holder without safety catch for other defensive sprays

This plastic holder is designated for **professional use**. It enables **very fast drawing** of the spray **sideways** from the holder.

This type of holder is designed for users who do not require a safety catch for the spray head.

Designation of the holder			Type of the fixation clip	Rotation (360°)
SHT-04	SHU-04	SHUN-04	UBC-01 belt clip	●
SHT-14	SHU-14	SHUN-14	UBC-02 belt clip	●
SHT-24	SHU-24	SHUN-24	paddle	●
SHT-34	SHU-34	SHUN-34	UBC-03 belt clip	●
SHT-44	SHU-44	SHUN-44	UBC-04 MOLLE clip	●
SHT-54	SHU-54	SHUN-54	UBC-05 belt clip	●
SHT-64	SHU-64	SHUN-64	metal clip	—
SHT-74	SHU-74	SHUN-74	UBC-07 MOLLE clip	●
SHT-84	SHU-84	SHUN-84	UBC-08 belt clip	●



more information on the clips on pages 2–5 and on the flap

SHT-04-50.63

SHT-14-50.63

SHUN-64-50.63

SHUN-24-50.63

Holders **SHT**, **SHU** or **SHUN** are produced in **4 variants**:

- for spray cans with volume of **40 ml**
e.g. **SHT-04-40** | **SHU-14-40** | **SHUN-24-40** ...
- adjustable for sprays with volumes **from 50 ml up to 63 ml**
e.g. **SHT-34-50.63** | **SHU-44-50.63** | **SHUN-54-50.63** ...
- adjustable for sprays with volumes **from 75 ml up to 100 ml**
e.g. **SHT-64-75.100** | **SHU-74-75.100** | **SHUN-84-75.100** ...
- adjustable for sprays with volumes **from 100 ml up to 130 ml**
e.g. **SHU-04-100.130** | **SHUN-14-100.130** ...



SHT-x4-40





SHU-x4-40



SHUN-x4-40



SHUN-x4-50-63

Examples of sprays suitable for our SHU or SHUN holders



SHUN-x4-75-100



SHU-x4-50-63



SH-x4-35 SH-x4-38 Plastic holder for defensive spray

This plastic holder is designated for **professional use**. The holder enables **quick drawing** of the spray.

- **SH-x4-35** for sprays with can diameter **35 mm**
- **SH-x4-38** for sprays with can diameter **38 mm**



SH-64



SH-04



SH-14

SHN-x4 Nylon holder for pepper sprays

The nylon holder for spray flashlights **TORNADO** and other defensive sprays has a **Velcro seal**. It has been designed for sprays of the diameter of 35 mm.

Volume of
spray

Type of holder

Type of holder

40 ml	SHN-x4-40	SHN-x4-TORNADO 40	for TORNADO 40 ml
50 ml	SHN-x4-50	SHN-x4-TORNADO 50	for TORNADO 50 ml
63 ml	SHN-x4-63	SHN-x4-TORNADO 63	for TORNADO 63 ml / 45 ml (360°)

Designation of the holder

CHOOSE YOUR
.... VOLUME OF SPRAY

Type of the fixation clip

Rotation
(360°)

SH-04	SHN-04-(ml)	SHN-04-TORNADO (ml)	UBC-01 belt clip	●
SH-14	SHN-14-(ml)	SHN-14-TORNADO (ml)	UBC-02 belt clip	●
SH-24	SHN-24-(ml)	SHN-24-TORNADO (ml)	paddle	●
SH-34	SHN-34-(ml)	SHN-34-TORNADO (ml)	UBC-03 belt clip	●
SH-44	SHN-44-(ml)	SHN-44-TORNADO (ml)	UBC-04 MOLLE clip	●
SH-54	SHN-54-(ml)	SHN-54-TORNADO (ml)	UBC-05 belt clip	●
SH-64	SHN-64-(ml)	SHN-64-TORNADO (ml)	metal clip	—
SH-74	SHN-74-(ml)	SHN-74-TORNADO (ml)	UBC-07 MOLLE clip	●
SH-84	SHN-84-(ml)	SHN-84-TORNADO (ml)	UBC-08 belt clip	●



SHN-04-50 (50 ml)



more information on
the clips on pages 2-5
and on the flap



SHN-64-40 (40 ml)

STUN GUNS

The stun gun is a favorite means of defense with the general public as well as professionals – for them we offer the **Max** version with higher voltage. The powerful electric discharge immediately **stops the attacker** and prevents him from further aggression. Even so, the stun gun **leaves no lasting psychological or physical effects**.

The electric stun gun is a close-contact means of self-defense – the **electrodes need to touch the attacker**. You don't have to worry about it backfiring if the attacker is touching you: the discharge is limited to the space between the electrodes.

The distance between the electrodes significantly influences the power of the stun gun. Thanks to their construction, the ESP stun guns are **effective even through a thick layer of clothes** – they can “power their way through” a **leather jackets**.

We have **long experience** with the production of electric stun guns. This ensures **reliable and quick customer support and maintenance** which you will certainly not receive with imported Chinese stun guns.

The batteries have the **lifetime of 4 years** (alkaline) or **10 years** (lithium) and are **replaceable**. The stun gun does not therefore need to be charged and you can be certain that it's always ready for your defense.

All types of ESP stun guns are **equipped with a safety switch** preventing any unintentional discharge. Thanks to the well-engineered **ergonomic design** the stun gun **fits any hand** – big and small, left and right. All types of stun guns are **supplied with a belt clip** which ensures you have the stun gun always at hand.

We produce 2 stun gun models:

- **POWER** classic stun gun with a safety plug
- **SCORPY** stun gun combined with a pepper spray “2 in 1”

We produce each of these types also in the **Max** version with a high power output of **500 000 V** which is designated **for professional use**.

POWER Max POWER 200 POWER Lady

Stun guns with a safety plug

These stun guns are equipped with a **safety plug**, which renders the device **non-functional in case it is snatched** ut of your hand.

We produce a version of the POWER stun gun which can be **officially sold in Germany**. These specifically modified stun guns **meet the requirements of German legislature**, have successfully passed testing in a German testing centre PTB (Physikalisch-Technische Bundesanstalt) and gained the certification necessary for their sale in Germany.

Our POWER stun guns were the **first stun guns to ever receive this permit**.

This permit includes the following models: **POWER Max**, **POWER 200** and **POWER Lady**. However, **POWER Lady** stun guns (pink color) cannot be sold directly by us in Germany because we produce them exclusively for a significant German customer.

Designation	Voltage	Suitable for	Power supply	Weight
POWER 200	200 000 Volts	general public	1 alkaline 9V battery	210 g
POWER Lady (pink color)				
POWER Max	500 000 Volts	professional use	2 alkaline 9V batteries	330 g

Overview of POWER 200 stun gun

A: contact electrodes • **B:** test electrodes • **C:** safety switch • **D:** trigger • **E:** cover of battery compartment • **F:** safety plug with hand strap • **G:** belt clip



POWER Max



POWER 200



POWER Lady



SCORPY Max SCORPY 200 Stun guns "2 in 1"

This defensive device **combines a defensive spray with a stun gun**. You are able to instantly choose the proper defense to meet any attack or to use both means of defense. This combination of the proven security products will **strongly increase the self-defense ability** of the user up to a **range of 2 m**.

Both the electric discharge and spray are easy to **operate by one hand only**. This eliminates complicated movements needed for using a stun gun and spray independently.

When using the **SCORPY** stun gun the defender gains the element of surprise. If the attacker sees that the defender has an electric stun gun, he does not expect to be hit by a stream of spray.

The pepper spray contains 10% Oleoresin Capsicum, is **non-flammable** and **non-conductive**. It can be swapped for a **replacement spray** which we supply to the **SCORPY** stun guns.

SCORPY Max



SCORPY 200

Designation	Voltage	Suitable for	Power supply	Weight
SCORPY 200	200 000 Volts	general public	1 alkaline 9V battery	250 g
SCORPY Max	500 000 Volts	professional use	2 alkaline 9V batteries	357 g

Overview of SCORPY 200 stun gun

A: spray nozzle, first contact electrode • **B:** second contact electrode • **C:** testing electrodes • **D:** electrical part safety switch • **E:** electric part trigger • **F:** spray trigger • **G:** cover of battery and spray compartment • **H:** wrist strap for fastening to hand



SGHN-64 Nylon holder for stun guns POWER or SCORPY

This holder is made of **highly resistant and light**, specially formed **nylon**. On the back side it is equipped with **metal clip**, which enables its rapid attachment to a belt (without the necessity of unbuckling it) or to a tactical vest.

SGH-x4 Plastic holder for stun guns POWER or SCORPY

This holder is designated for **professional use**. The holder comes adjusted by the manufacturer for the stun gun **POWER**. The user can easily accommodate the holder for **SCORPY** stun gun and during this modification it is also possible to choose whether the holder will be carried on the left or on the right side.



SGHN-64-P2



SGH-x4-PM

Designation of the holder for stun gun type:

POWER 200	POWER Max	SCORPY 200	SCORPY Max	Type of the fixation clip	Rotation (360°)
SGH-04-P2	SGH-04-PM	SGH-04-S2	SGH-04-SM	UBC-01 belt clip	•
SGH-14-P2	SGH-14-PM	SGH-14-S2	SGH-14-SM	UBC-02 belt clip	•
SGH-24-P2	SGH-24-PM	SGH-24-S2	SGH-24-SM	paddle	•
SGH-34-P2	SGH-34-PM	SGH-34-S2	SGH-34-SM	UBC-03 belt clip	•
SGH-44-P2	SGH-44-PM	SGH-44-S2	SGH-44-SM	UBC-04 MOLLE clip	•
SGH-54-P2	SGH-54-PM	SGH-54-S2	SGH-54-SM	UBC-05 belt clip	•
SGH-64-P2	SGH-64-PM	SGH-64-S2	SGH-64-SM	metal clip	—
SGH-74-P2	SGH-74-PM	SGH-74-S2	SGH-74-SM	UBC-07 MOLLE clip	•
SGH-84-P2	SGH-84-PM	SGH-84-S2	SGH-84-SM	UBC-08 belt clip	•

more information on the clips on pages 2–5 and on the flap

IMPACT RESISTANT POLICE SHIELDS

AS-60 ASU-60 ASUD-60 Police shield

ESP shield is made of high-quality, **extremely resistant polycarbonate** with thickness of **3 mm** (it can be increased upon request **up to 5 mm**). All ESP shields have **quality certificate** issued by testing laboratory at ITC Zlín, Czech Republic.

Inner ergonomically shaped reinforced plate **efficiently dampens impacts and vibrations** on holding hand. V-shaped form of the shield **conducts blows efficiently aside**. The rubber handles with deep reeding **ensure secure grip**.



ASR-60 ASRU-60 ASRUD-60 Police shield with a rounded front plate

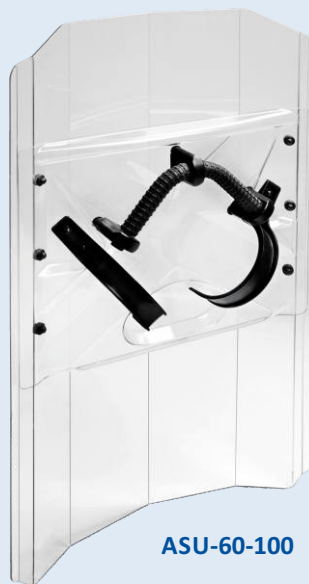
This shield differs from the type **AS** or **ASU** or **ASUD** by the fact that the profile of its front plate is rounded, **not broken into vertical lines**. All other data are identical.



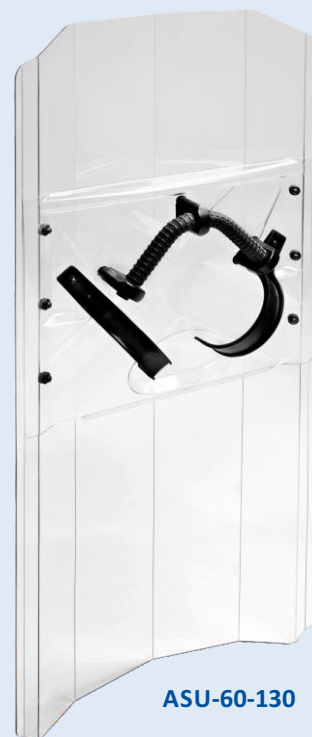
AS-60-100/L



ASR-60-100/R



ASU-60-100



ASU-60-130

AS / ASR: Held by one hand – only in left or right hand (depending on the shield type) with possibility of support grip by free hand

ASU / ASRU: Can be held by either hand – universal (can be held only by one hand at one time)



AS-60-100/L
(held in left hand)



ASRUD-60-100

ASUD / ASRUD: Held by either hand (universal) with possibility of support grip by free hand



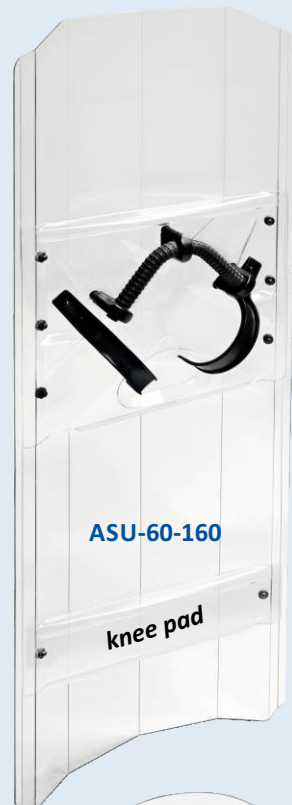
www.esp-link.com/shield-ultimate-test



www.esp-link.com/shield-throwing-weapons

Height	Designation of the shield		Holding of the shield	Weight	Width *
1 000 mm	AS-60-100/L	ASR-60-100/L	in left hand	3,50 kg	560 mm
	AS-60-100/R	ASR-60-100/R	in right hand	3,50 kg	560 mm
	ASU-60-100	ASRU-60-100	in left or in right hand	3,65 kg	560 mm
	ASUD-60-100	ASRUD-60-100	in left or in right hand	4,25 kg	560 mm
1 300 mm	AS-60-130/L	ASR-60-130/L	in left hand	4,15 kg	560 mm
	AS-60-130/R	ASR-60-130/R	in right hand	4,15 kg	560 mm
	ASU-60-130	ASRU-60-130	in left or in right hand	4,30 kg	560 mm
	ASUD-60-130	ASRUD-60-130	in left or in right hand	4,90 kg	560 mm
1 600 mm	AS-60-160/L	ASR-60-160/L	in left hand	4,80 kg	560 mm
	AS-60-160/R	ASR-60-160/R	in right hand	4,80 kg	560 mm
	ASU-60-160	ASRU-60-160	in left or in right hand	4,95 kg	560 mm
	ASUD-60-160	ASRUD-60-160	in left or in right hand	5,55 kg	560 mm

* width tolerance: ± 10 mm



ASC-57-60 ASCU-57-60 Circle police shield

This shield is made of high-quality, **extremely resistant polycarbonate** (thickness **3 mm**). The shield has a **quality certificate** issued by testing laboratory at ITC Zlín, Czech Republic.

Inner ergonomically shaped reinforced plate **efficiently dampens impacts and vibrations** on holding hand. The rubber handles with deep reeding **ensure secure grip**.

Designation of the shield	Holding of the shield	Weight	Width	Height
ASC-57-60/L	in left hand	2,00 kg	570 mm	600 mm
ASC-57-60/R	in right hand	2,00 kg		
ASCU-57-60	in left or in right hand	2,32 kg		



Sling for carrying the round shield

This **two-point** shield sling facilitates comfortable carrying of a **round ESP shield** of the **ASC / ASCU** type. **Your hands remain freed** for other activities (pepper spray use, handcuffing of the aggressor), but you can also immediately take cover. The shield sling does not take up too much space on your gear thanks to its advantageous **width of only 30 mm**. The sling's material is sufficiently supple so as not to limit you during prolonged carrying.

A 20-cm long flexible strap (called bungee) is located at both ends of the shield sling. The **bungee strap** allows for quicker handling of the shield even in full gear. The flexible bungee cords are placed inside a protective nylon cover.

A **movable loop** allows for swift adjustment of the shield sling into optimum length for the specific user (from 137 to 189 cm). The shield sling's length can be changed according to current requirements of the gear or situation – even when the sling is already in position on the user's body.

The shield is attached with **two metal snap-hooks**. The hooks have a nylon cover which **absorbs their clicking** against the shield. An **emergency plastic clip** for quick unfastening of the shield is placed at easy reach in the front part of the shield sling.

Total sling length: **137–189 cm** (depending on the setting). Weight: 253 g. Sling color: black.



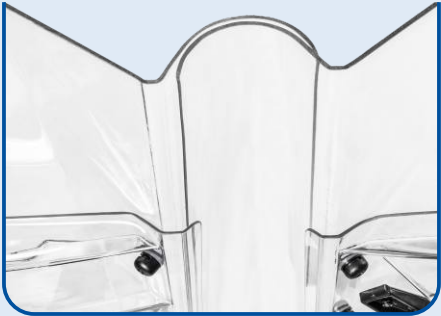
AS-W-60 ASU-W-60 ASUD-W-60

Interlocking anti-riot shield

The shield is equipped with interlocking components on its sides which enable **connecting** several shields **into one row**. The sides of the shields can be fit into one another within seconds, creating a sturdy protective barrier – a shield wall.

Another shield can be placed perpendicularly **on top of the 168 cm shield**, providing the anti-riot team members protection from the top as well. Thanks to the specially shaped upper edge, the shields **fit very closely together** which significantly increases the safety of the protected persons.

In case of need, the shields can be **quickly disconnected again** and used separately. **Only the shields of the type AS-W can be interlocked, the locking of type AS is not possible.**

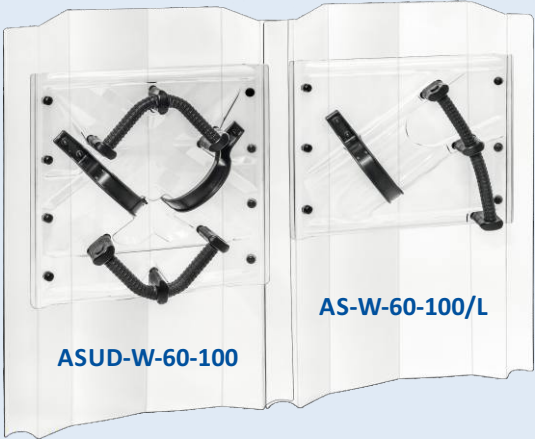


168 cm police shields are equipped with a **knee pad** which ensures **better comfort and stability** when holding the shield. The ergonomic shape of the knee pad **efficiently dampens** the vibrations from strikes into the legs of the user. This knee pad also further reinforces the lower part of the shield. The interlocking parts on the sides of the knee pad ensure **much tighter connection** between the tall shields (the shields are locked in the upper part near the handles and in the lower part near the knee). This knee pad is already **included in the price** of the 165 cm police shield.

Made of extremely resistant polycarbonate with the thickness of **3 mm**.

Height	Designation of the shield	Holding of the shield	Weight	Width
1 000 mm	AS-W-60-100/L	in left hand	4,00 kg	685 mm
	AS-W-60-100/R	in right hand	4,00 kg	685 mm
	ASU-W-60-100	in left or in right hand	4,15 kg	685 mm
	ASUD-W-60-100	in left or in right hand	4,75 kg	685 mm
1 685 mm	AS-W-60-165/L	in left hand	5,80 kg	685 mm
	AS-W-60-165/R	in right hand	5,80 kg	685 mm
	ASU-W-60-165	in left or in right hand	5,95 kg	685 mm
	ASUD-W-60-165	in left or in right hand	6,55 kg	685 mm

* width tolerance: ± 10 mm



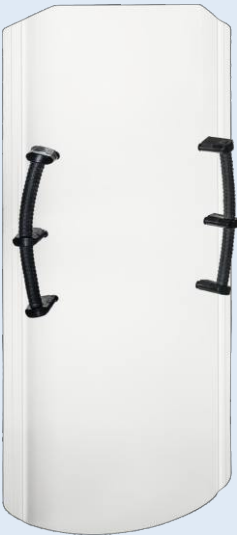
ACS-60-120 Capture shield

This shield is made of extremely resistant polycarbonate with the thickness of **4 mm**. The shield plate is rounded.

The shield protects members of the police or prison guard in action and at the same facilitates **quick immobilization** of the uncooperative or aggressive person (by fixating them against the wall or on the ground). It is mainly meant for use **in closed spaces**, for example **prison cells**.

The two rubber handles with **deep reeding** ensure **secure grip**. The handles are sufficiently long for two people to hold the shield with both hands.

Dimensions: 550 ± 10 mm × 1 200 mm, weight 4 kg.



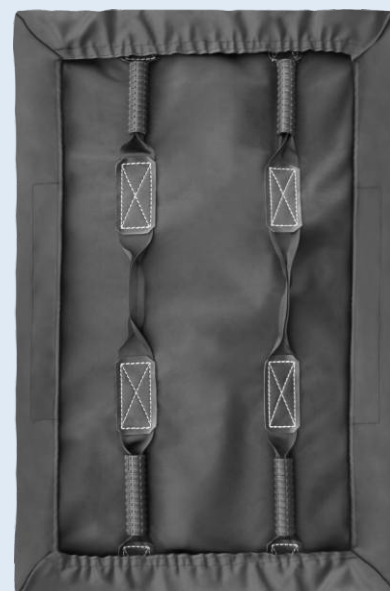
ACSF-60-95 Soft restraining shield

This shield is made of **foam material** and has a **replaceable nylon cover**. A polycarbonate plate of the width of 3 mm is inserted between the layers of foam and **prevents the entry of sharp objects** through the shield and also **reinforces the shield**.

The shield protects its user from aggressive or non-cooperative persons. It is designed in a way which **prevents the restrained person's injury**. It is a suitable means of protection for the staff of sobering-up stations or psychiatric wards.

The shield can be **comfortably held** by its **4 rubber handles** with **anti-slip surface**. There are also two straps for the user's arm in the middle of the shield.

- Width: 600 mm • Height: 950 mm • Depth: 100 mm • Weight: 5,69 kg



Accessories for anti-riot shields – extra cost

Holder for baton

The shields (except of the types **ASC** and **ACS**) can be equipped with the **holder for plastic baton**. It is suitable for batons with diameter from 25 to 35 mm.

Label – designation of your unit

All our police shields can be equipped with the **designation of your unit** – for example **POLICE, MUNICIPAL POLICE** and so on. The label is applied onto the inner side of the plate which guarantees its durability.

The label should not exceed the width of 450 mm, the recommended height is about 200 mm – so as not to obstruct the shield user's view.

We most often supply shields with **white text on a black background**. If you have any special request regarding the shield labeling, please let us know and we will be sure to figure something out.



Holder for baton

Sling for the arm

All our anti-riot shields can be supplied with a durable **sling for the arm** (instead of the standard plastic hook). The clip on the sling allows the user to quickly put the shield aside if necessary.

Foam filling in plastic hooks

The plastic hooks of our circle shields type **ASC / ASCU** can be fitted with **foam filling** which protects your forearm and makes impact blocking much more comfortable.



Sling for the arm



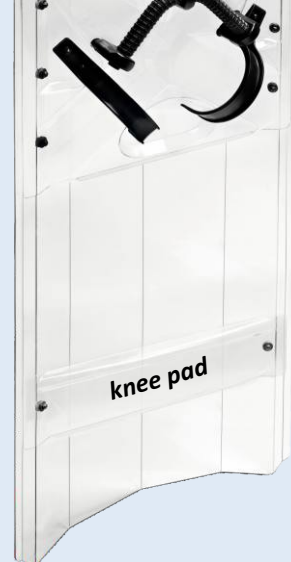
Foam filling in hook



Knee pad for police shield

130 cm and 160 cm police shields can be equipped with a knee pad which ensures **better comfort and stability** when holding the shield. The ergonomic shape of the knee pad **efficiently dampens the vibrations** from strikes into the legs of the user.

The knee pad also further strengthens the lower part of the shield. The knee pad can be supplied as an optional accessory for the shield for additional cost.



ASB Protective cover for the anti-riot police shield

The cover protects the shield **during transport and storage**.

It is made of high quality **rubberized fabric**. It has a handle and tiltable flap equipped with fixing **Velcro seal**.

This cover is not designed for the interlocking shields of the type **AS-W**.



ASB-60-100



ASB-57-60

Designation of the cover

Suitable for

ASB-60-100

100cm shields

ASB-60-130

130cm shields

ASB-60-160

160cm shields

ASB-57-60

circle shields

ASB-60-120

capture shield

TEXTILE DISPOSABLE HANDCUFFS

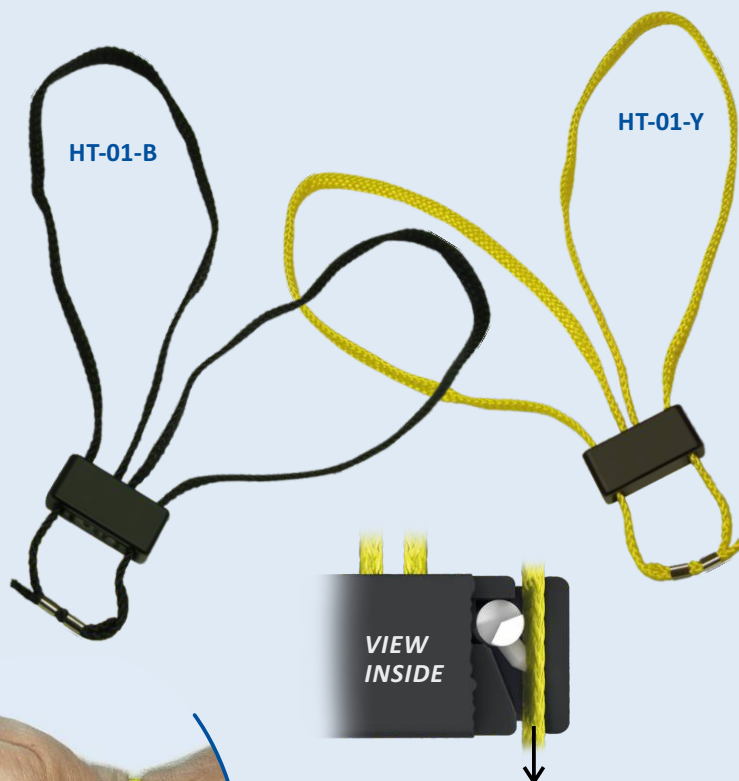
HT-01-Y HT-01-B Textile disposable handcuffs

The handcuffs use a unique locking system, which ensures that even very physically strong individuals cannot get out from these handcuffs. High tearing strength of the handcuffs – over **200 kg**, verified by certified tests. Main advantages consist in **low weight** (only 22 grams) and **easy storage**.

This product is **patented in the USA** and **in Europe**. These handcuffs are **broadly used** by Police of the Czech Republic and Slovakia.

The bright **yellow** color of the handcuffs (**HT-01-Y**) enables easy identification of the handcuffed person. Handcuffs can also be made in **black** color (**HT-01-B**). They are supplied in a set of 5 pieces.

Removal of handcuffs is made by multipurpose ESP cutter – type **HK-02** – which can also cut the seat belts. ESP rescue knives are equipped with the same cutter.



www.esp-link.com/textile-handcuffs



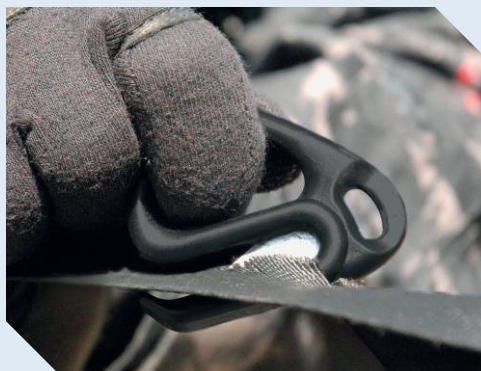
www.esp-link.com/handcuffs-cutter

HK-02 HK-02-B Multi-purpose cutter for removal of disposable handcuffs

The cutter has an ergonomic shape with an opening for safe holding and also a hole for attachment to clothes or to a key-ring. The sharp edge of the cutter is embedded in order to prevent any injury during manipulation. Plastic lead-in part of the cutter with special shape enables its easy sliding under the handcuffs.

This cutter can be easily used for other purposes besides removal of disposable handcuffs. Thanks to the special shape of the blade it is possible to use this cutter also for rapid cutting of **car safety belts**, either in a car accident or during police crackdown on dangerous person sitting in the vehicle. The multi-purpose cutter **HK-02** can be also used for easy and safe removal of clothes during emergency first aid.

HK-02-B: This multi-purpose cutter is also available **with a strap for comfortable carrying** on a **tactical vest** or a **duty belt**. Thanks to this you will have your cutter always at your disposal. The strap is manufactured from a **durable nylon** and can be attached to the duty belt **up to 55 mm in width** as well as to a **MOLLE webbing**.






HTH-x3 HTH-x6 HTH-x9

Plastic holder for 3, 6 or 9 pieces of textile handcuffs

This plastic holder is designated for comfortable daylong **carrying of larger number** of disposable textile handcuffs of the type **HT-01**. They are inserted into the holder after turning the top cover. The holder is made from **highly resistant polyamide** and it is manufactured in variants for 3, 6 or 9 pieces of textile handcuffs.

Instructions for putting the handcuffs into the holder ("loading") are given on the lid of casing. After opening of the side flexible flap the handcuffs can be quickly and easily taken out by pulling the textile ribbon. After it becomes empty, the holder can be easily filled with other handcuffs and be thus ready for another action.

Designation of the holder			Type of the fixation clip	Rotation (360°)
for 3 pieces of handcuffs	for 6 pieces of handcuffs	for 9 pieces of handcuffs		
HTH-03	HTH-06	HTH-09	UBC-01 belt clip	●
HTH-13	HTH-16	HTH-19	UBC-02 belt clip	●
HTH-23	—	—	paddle	●
HTH-33	HTH-36	HTH-39	UBC-03 belt clip	●
HTH-43	HTH-46	HTH-49	UBC-04 MOLLE clip	●
HTH-53	HTH-56	HTH-59	UBC-05 belt clip 	●
HTH-63	HTH-66	HTH-69	metal clip	—
HTH-73	HTH-76	HTH-79	UBC-07 MOLLE clip 	●
HTH-83	HTH-86	HTH-89	UBC-08 belt clip 	●



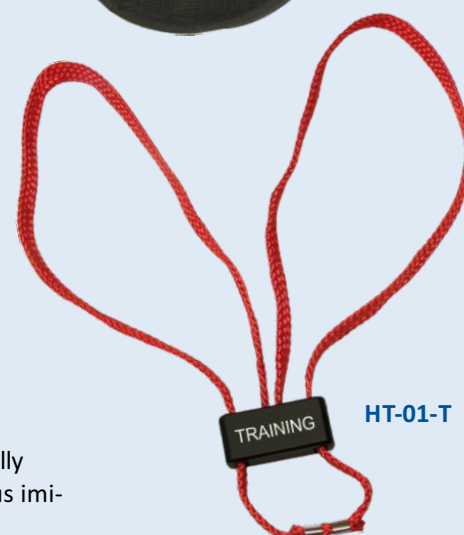
more information on the clips
on pages 2–5 and on the flap



HTH-x3



HTH-x9



HT-01-T

HT-01-T Training version of textile handcuffs

We offer together with disposable handcuffs **HT-01-Y** or **HT-01-B** also their **training** version **HT-01-T** in **red color**, which makes it possible to train handcuffing techniques without the necessity of destroying real disposable handcuffs.

Instead of fixation locks, these handcuffs are equipped with **silicone friction rollers**, which enable smooth and easy fixation of handcuffs. At the same time, the handcuffs remain realistically resistant when the handcuffed person tries to release himself or herself from them. They thus imitate the behavior of actual disposable handcuffs, but can be easily and safely taken off.

METAL HANDCUFFS

key for HM-01 handcuffs

HM-01 Stainless steel handcuffs

These **chain handcuffs** are made from highly resistant **stainless steel**. It is **medically sound** and does not cause skin allergies (as compared to handcuffs with nickel or chrome surface cover).

The mechanical strength of the handcuffs **complies with the high demands of the NIJ 0307.01 standard**, the internationally recognized metal handcuffs performance test. Weight of handcuffs is 310 g.

Thanks to a **double lock** the handcuffs are significantly more secure against attempts to unlock them. They are supplied with a **pair of keys** (standard universal key).



HM-02 Lightweight handcuffs from aircraft duraluminum

These **chain handcuffs** are made from highly resistant **aircraft duraluminum of the type 6061** in combination with stainless steel. Thanks to used material **weighs only 226 g**, however, they maintain the toughness of a standard metal handcuffs.

Thanks to a **double lock** the handcuffs are significantly more secure against attempts to unlock them. They are supplied with a **pair of keys with a unique shape**.



HM-03 Stainless steel hinged handcuffs

These **hinged handcuffs** are made from highly resistant **stainless steel**. It is **medically sound** and does not cause skin allergies (as compared to handcuffs with nickel or chrome surface cover). Weight of handcuffs is 450 g.

The two parts of the handcuffs are connected by a stainless steel hinge which allows them to open **only within the 180 degree angle**. The construction of the handcuffs significantly restrains the detainee's hand movement and minimizes the risk of unwanted unlocking of the handcuffs. The key holes are positioned in the direction of the detainee's body and are therefore **completely out of reach of their hands**.

The handcuffs have a **double lock**. After locking them, the lock can be blocked by pressing a peg on the side of the handcuffs with the tip of the key. This mechanism also **prevents further tightening of the handcuffs** on the wrists. They are supplied with a **pair of keys** (standard universal key).



HMH-01 Nylon holder for metal handcuffs

This holder is designated **for majority of the types** of used metal handcuffs. It is made of **highly resistant and light**, specially formed **nylon**. Inside the holder is a very useful **pocket for spare key**, thanks to which the key is always readily available.

On the back side it is equipped with **metal clip**, which enables its rapid attachment to a belt (without the necessity of unbuckling it) or to a tactical vest.



HMHL-x4 Leather holder for metal handcuffs

This leather holder is designated **for majority of the types** of used metal handcuffs. It has been **hand-crafted from quality cow hide**. This type of hide is very solid and perfectly resists any damage or moisture.


It is equipped with **metal clip** or with **UBC-05 belt clip**.

- Weight: 129 g (HMHL-54) • 89 g (HMHL-64)



HMHL-x4

HMH-01 pocket for spare key

Designation of the holder	Type of the fixation clip	Rotation (360°)
HMHL-54	UBC-05 belt clip 	•
HMHL-64	metal clip	—

DOUBLE HOLDERS (EXAMPLES)



flashlight + pepper spray



magazine + flashlight



baton +
pepper spray



baton +
flashlight

PALM-STICK | TACTICAL PENS

KBT-01 Palm-stick

This inconspicuous means of defense, also known as *yawara*, *pasak* or *dulodulo*, is made from **tough plastic material** and serves to significantly **enhance the defensive abilities** of its users. The palm-stick can be used for **hits**, for **pressuring** the nerve points or for **levers**. Its central part is **knurled**, which prevents the palm-stick from slipping from your hand.

At the end it **has a metal ring** for a keyring. The palm-stick is supplied **with a string** allowing its fixation to 2 or 3 fingers, so that it remains in your hand when you need to grab the attacker. The length of the strings can be set according to the user's specification. Dimensions: length 155 mm, diameter 15 mm, weight 30 g.



KBT-01

KBT-02 KBT-03 Tactical pen ESP with a glass breaker

The tactical pen is a perfect combination of a **ballpoint pen** and **palm-stick**. It is an unobtrusive means of defense, which will always be at hand as it has the shape and form of an ordinary writing pen. You can use this pen to **hit** or **put pressure** on the neural points of the attacker. Its **ergonomic shape** and **grooves** ensure **sure grip**.

The screw cap is equipped with a **glass breaker** made of **tungsten carbide**. Thanks to this extremely hard metal you can **break glass barriers** even by a weaker strike. The cap also has a **clip** providing secure fastening of the pen e.g. in a breast pocket. The cap can be screwed onto both ends of tactical pen.

The pen is made of **duraluminum of the type 6061**, a **highly resistant material** used in the production of airplanes. The surface is further enhanced by **hard anodization**, which prevents it from scratches.

Replaceable cartridge with **blue ink** writes with line thickness of **0,5 mm**.

Color: **black / titanium grey**. Tactical pen of the type KBT-02 is not saleable in Germany.



KBT-02

KBT-03



Type	Length	Diameter	Weight
KBT-02	160 mm	15 mm	50 g
KBT-03	145 mm	14 mm	40 g



TACTICAL FLASHLIGHTS

HELIOS 10 Tactical police flashlight with 10W LED chip Cree XM-L2

Tactical flashlight with the **innovative Cree LED chip XM-L2** with **10W performance** ensures the luminosity of **up to 760 lm**. The flashlight is **waterproof** (it can be submerged in shallow water) and it can withstand rough handling.

The flashlight is made from **highly resistant duralumin**. The front glass is made of polycarbonate. Strongly grooved rubber head ring **prevents rolling** of the flashlight on smooth surface. Body diameter at the handle is 25 mm.

The metal switch is placed at the end of the flashlight. The switch is **tactical** – it can be pressed lightly for momentary output (lasting only through the duration of the pressure) or it can be pressed fully, switching the flashlight into constant output.

Power supply – package includes	Modes of lighting	Head diameter	Designation of the flashlight	Length	Weight (incl. 18650 battery)
18650 battery, charging adapter with integrated USB cable	4 modes	34 mm	HELIOS 10-34-4R	139 mm	152 g
		37 mm	HELIOS 10-37-4R	152 mm	175 g
	1 mode	34 mm	HELIOS 10-34-R	139 mm	152 g
		37 mm	HELIOS 10-37-R	152 mm	175 g
2 pcs of non-rechargeable battery CR 123A	4 modes	34 mm	HELIOS 10-34-4N	139 mm	152 g
		37 mm	HELIOS 10-37-4N	152 mm	175 g
	1 mode	34 mm	HELIOS 10-34-N	139 mm	152 g
		37 mm	HELIOS 10-37-N	152 mm	175 g

HELIOS 10-34



HELIOS 10-37



charging adapter

HELIOS 10 flashlights with 4 modes of lighting

This version of flashlight comprises an electronic module, which enables **4 modes of lighting**. Switching between individual modes is made **by short pressing** of tactical switch. The pressings must follow one another very quickly. At longer break (longer than approx. 2 seconds) the flashlight returns to the mode of full output.

1st pressing = **100 %** | 2nd pressing = **strobe** | 3rd pressing = **50 %** | 4th pressing = **10 %** (battery saving mode)

HELIOS 10-37 flashlights

Compared to the **HELIOS 10-34** model, the **light beam of this flashlight is narrower** and can thus **illuminate an object at a greater distance**.

HELIOS 10 flashlights supplied with a charging adapter

The flashlight is powered by the **18650 type battery** which **can be charged** in the **adapter with integrated USB cable**. The adapter can be connected to a **charger from a regular smartphone** (this charger is not part of the package) or the battery in the adapter can be charged **from a PC or a laptop**.

The flashlight can also be powered by 2 pcs of non-rechargeable battery CR 123A in combination with the plastic insert (incl. in the package) which compensates for the smaller diameter of the battery. This can be very useful as a back-up power source.

HELIOS 10 flashlights supplied with non-rechargeable batteries

The flashlight is supplied with **2 pcs of non-rechargeable battery CR 123A** in combination with a plastic insert which compensates for the smaller diameter of the battery. Rechargeable batteries (type 18650) can also be used to power the flashlight.

CR 123A



HELIOS ULTRAZOOM Tactical police flashlight with 5W LED chip

Tactical flashlight with 5W LED chip SST-20 ensures the luminosity of **up to 200 lm**. The flashlight can withstand rough handling.

This version of flashlight is fitted with a special lens that allows **re-focusing between narrow and wide light beam**. When narrow cone of light is used, it illuminates a surface with **diameter of only 60 cm at a distance of 10 m!**

The flashlight is made from **highly resistant duralumin**. Strongly grooved rubber head ring **prevents rolling** of the flashlight on smooth surface. The metal switch is placed at the end of the flashlight. The switch is **tactical** – it can be pressed lightly for momentary output (lasting only through the duration of the pressure) or it can be pressed fully, switching the flashlight into constant output.

Head diameter 37 mm, body diameter at the handle 25 mm. Length 141 mm. Weight 175 g (incl. 18650 battery).



**ULTRA
ZOOM**

Designation of the flashlight	Modes of lighting	Power supply – package includes
HELIOS ULTRAZOOM-4R	4 modes	18650 battery, charging adapter with integrated USB cable
HELIOS ULTRAZOOM-R	1 mode	
HELIOS ULTRAZOOM-4N	4 modes	2 pcs of non-rechargeable battery CR 123A
HELIOS ULTRAZOOM-N	1 mode	



Flashlights with 4 lighting modes – HELIOS ULTRAZOOM | BARRACUDA 10

This version of flashlight comprises an electronic module, which enables **4 modes of lighting**. Switching between individual modes is made **by short pressing** of tactical switch. The pressings must follow one another very quickly. At longer break (longer than approx. 2 seconds) the flashlight returns to the mode of full output.

1st pressing = **100 %** | 2nd pressing = **stroboscope** | 3rd pressing = **50 %** | 4th pressing = **10 %** (battery saving mode)

Flashlights supplied with a charging adapter – HELIOS ULTRAZOOM | BARRACUDA 10

The flashlight is powered by the **18650 type battery** which **can be charged** in the **adapter with integrated USB cable**. The adapter can be connected to a **charger from a regular smartphone** (this charger is not part of the package) or the battery in the adapter can be charged **from a PC or a laptop**.

The flashlight can also be powered by 2 pcs of non-rechargeable battery CR 123A in combination with the plastic insert (incl. in the package) which compensates for the smaller diameter of the battery. This can be very useful as a back-up power source.

Flashlights supplied with non-rechargeable batteries – HELIOS ULTRAZOOM | BARRACUDA 10

The flashlight is supplied with **2 pcs of non-rechargeable battery CR 123A** in combination with a plastic insert which compensates for the smaller diameter of the battery. Rechargeable batteries (type 18650) can also be used to power the flashlight.

BARRACUDA 10 Tactical police flashlight with 10W LED chip Cree XM-L2

Tactical flashlight with the **innovative Cree LED chip XM-L2** with **10W performance** ensures the luminosity of **up to 760 lm**. The flashlight is **waterproof** (it can be submerged in shallow water) and it can withstand rough handling.

The flashlight is made from **highly resistant duralumin**. The front glass is made of polycarbonate. Robust body of the flashlight has **ergonomic shape**. It enables also so called **“cigar holding”** together with weapon. Its grooved surface significantly enhances safe grip under any conditions. Strongly grooved head **prevents rolling** of the flashlight on smooth surface.

The metal switch is placed at the end of the flashlight. The switch is **tactical** – it can be pressed lightly for momentary output (lasting only through the duration of the pressure) or it can be pressed fully, switching the flashlight into constant output.

Head diameter 34 mm, body diameter at the handle 25 mm. Length 142 mm. Weight 145 g (incl. 18650 battery).

Designation of the flashlight	Modes of lighting	Power supply – package includes
BARRACUDA 10-4R	4 modes	18650 battery, charging adapter with integrated USB cable
BARRACUDA 10-R	1 mode	
BARRACUDA 10-4N	4 modes	2 pcs of non-rechargeable battery CR 123A
BARRACUDA 10-N	1 mode	



TREX Tactical police flashlight with 5W LED chip Cree

Police tactical duralumin flashlight with advanced powerful **5W Cree LED chip XP-G3** with high luminosity of **up to 200 lm**.

Highly resistant **dampness-proof** duralumin body. The front glass is made of **polycarbonate**. Strongly grooved rubber head ring **prevents rolling** of the flashlight on smooth surface. The switch is on the bottom of the flashlight.

Power supply by **3 pcs of alkaline AAA batteries, which are included in the price**. It can be also used as a part of the **"Night police set"** with plastic red signal cone and nylon holder (see page 42). A swiveling holder of the type **LHU** is available for comfortable carrying of the flashlight (see below).

- Head diameter **33 mm** | Body diameter **27 mm** (at the handle)
- Length **113 mm** | Weight **129 g** (incl. batteries)



POCKET FLASHLIGHTS

MAGNUM Duralumin flashlight with 14 LED diodes

Durable duralumin flashlight **resistant to moisture** with **14 LED diodes**. It gives **high intensity light** with wide rays.

The front glass is made of **polycarbonate**. Rubber coated handle. The switch is located at the flashlight end. **Three AAA alkaline batteries are included in the price**. Color: black.

- Head diameter **34 mm** | Body diameter **30 mm** (at the handle)
- Length **109 mm** | Weight **126 g** (incl. batteries)



CARRYING FLASHLIGHTS

LHU-x4 Universal plastic holder for tactical flashlight

This universal plastic holder for tactical flashlight is designated for **professional use**. It enables **very quick drawing** of the flashlight by **tilting it out**.

It contains also a **safety lock** preventing spontaneous release of the flashlight. The flashlight in horizontal or slightly inclined position can be used **for permanent lighting** in front of the user, freeing thus his hands.

Design of this holder was already **patented** in Europe and in the USA.



Many types of flashlights of various brands with various shapes of head and body fit our **LHU** holders.



LHU-04-34-24.26



UNLOCKED



LOCKED

Designation of the ESP flashlight Suitable type of the holder

HELIOS 10-34	LHU-x4-34-24.26
HELIOS 10-37	LHU-x4-37-24.26
HELIOS ULTRAZOOM	LHU-x4-37-24.26
BARRACUDA	LHU-x4-34-24.26
TREX	LHU-x4-34-24.26



The flashlight can be easily tilted out of the holder



LHU-x4-27-23

We produce LHU holder for flashlights of most sizes

LHU-x4-47-32.35

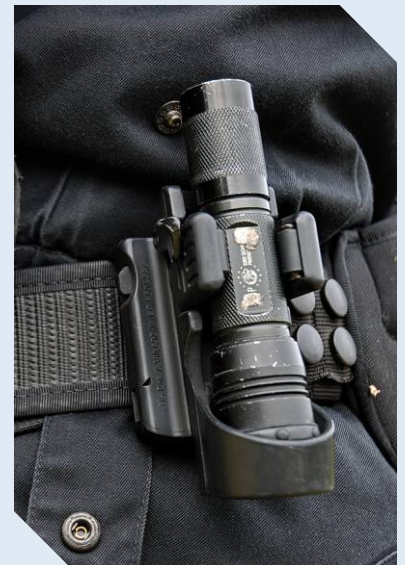


Firstly choose the attachment type:

Choose the flashlight head diameter:

Choose the flashlight body diameter:

LHU-	04- UBC-01 belt clip		27- for flashlights with head diameter of 27 mm	23 for flashlights with body diameter of 23 mm
	14- UBC-02 belt clip		34- for flashlights with head diameter up to 34 mm	24.26 for flashlights with body diameter from 24 to 26 mm
	24- paddle		37- for flashlights with head diameter up to 37 mm enables additional elongation of the holder by 18 mm	27.30 for flashlights with body diameter from 27 to 30 mm
	34- UBC-03 belt clip		43- for flashlights with head diameter up to 43 mm enables additional elongation of the holder by 18 mm	31 for flashlights with body diameter of 31 mm
	44- UBC-04 MOLLE clip		47- for flashlights with head diameter up to 47 mm enables additional elongation of the holder by 43 mm	32.35 for flashlights with body diameter from 32 to 35 mm
	54- UBC-05 belt clip	 		
	64- metal clip			
	74- UBC-07 MOLLE clip	 		
	84- UBC-08 belt clip	 		



LHU-64-37-27.30

more information on the clips on pages 2–5 and on the flap

LH-x4 LH-02 Plastic holder for tactical flashlight

This plastic holder is designated for **professional use**. The holder enables a **quick drawing** of the flashlight. The flashlight in horizontal or slightly inclined position can be used **for permanent lighting** in front of the user, freeing thus his hands.

This holder is designed for the flashlights **HELIOS 10** and **BARRACUDA**, as well as for flashlights of similar shape and dimensions **with body diameter of 25 mm**.

- **LH-02:** This holder can be attached to a belt **by slipping the belt through the opening** in the holder (the holder has no plastic belt clip).

Designation of the holder	Type of the fixation clip	Rotation (360°)
LH-04	UBC-01 belt clip	●
LH-14	UBC-02 belt clip	●
LH-24	paddle	●
LH-34	UBC-03 belt clip	●
LH-44	UBC-04 MOLLE clip	●
LH-54	UBC-05 belt clip	●
LH-64	metal clip	—
LH-74	UBC-07 MOLLE clip	●
LH-84	UBC-08 belt clip	●

more information on the clips on pages 2–5 and on the flap



LH-02

LH-14



LH-04



LH-14

NPS-01-x4 NPS-02-x4 Night police set – MAGNUM or TREX

Flashlight **MAGNUM (14 LED)** or **TREX** makes it possible to create so called “**Night police set**” consisting of plastic red signal cone, flashlight and nylon pouch with various fixing clips (*see table below*). The main advantage of this solution is in the fact that the signal cone does not take any extra space in the pouch as the flashlight is inserted into it. At the same time it **strengthens the pouch** and thus **increases the protection** of the flashlight.

The cone is open at its top, which enables normal use of the flashlight for **lighting with white light** without necessity of removing the cone (checking of documents, checking of interior of vehicle, etc.). Excellent tool, not only for traffic police.



Night police set TREX

Night police set MAGNUM

Designation of the night police set with:		Type of the fixation clip	Rotation (360°)
MAGNUM flashlight	TREX flashlight		
NPS-01-04	NPS-02-04	UBC-01 belt clip	●
NPS-01-14	NPS-02-14	UBC-02 belt clip	●
NPS-01-24	NPS-02-24	paddle	●
NPS-01-34	NPS-02-34	UBC-03 belt clip	●
NPS-01-44	NPS-02-44	UBC-04 MOLLE clip	●
NPS-01-54	NPS-02-54	UBC-05 belt clip	●
NPS-01-64	NPS-02-64	metal clip	—
NPS-01-74	NPS-02-74	UBC-07 MOLLE clip	●
NPS-01-84	NPS-02-84	UBC-08 belt clip	●

more information on the clips on pages 2–5 and on the flap



NPS-02-64 (with TREX)



DETECTION MIRRORS

DM-160 DM-220 Detection mirror

This detection mirror serves for inspection of hazardous spaces and for under vehicle inspections. The mirror's curved shape is very advantageous as it **greatly increases the angle of observation**. The mirror is fixed to the rod with a **swiveling joint**, which makes it possible to adjust the angle of observation.

It uses duralumin **lightweight telescopic** rod, the length of which can be adjusted from 500 mm to 1 050 mm and then collapsed back to compact dimensions. **Anti-slip handle** enables safe grip. The mirror can be easily removed from the rod for easier transport.

The detection mirror can be supplied **with lighting** for inspection of darker spaces (*see below*). Detection mirror can be equipped also with a special handle, which considerably **reduces strain-ing of arms** during its long-time use. Type **DM-220** is supplied only with this type of handle.

DMW-220 Detection mirror with a wheel

This detection mirror is equipped with a wheel which **significantly eases** the process of security checks. The wheel turns in all directions so you can **comfortably maneuver the mirror** into the desired spot – for instance beneath vehicles. The mirror's curved shape is very advantageous as it **greatly increases the angle of observation**. The wheel also helps support the weight of the mirror and does not strain the arm of the user during prolonged use.

The mirror is fixed to the rod with a **swiveling joint**, which makes it possible to adjust the angle of observation. At the other end of the ergonomically shaped steel rod with the wheel is a **rubber handle** for comfortable hold of the inspection mirror.

The **hand strap** at the top of the handle can be used either for the user's wrist or for hanging the mirror when not in use. The detection mirror can also be supplied **with lighting** which enables the user to inspect darker spaces.

Detection mirrors with lighting

All types of mirrors can be equipped **with a lighting** – it is possible to choose between 2 types of flashlights:

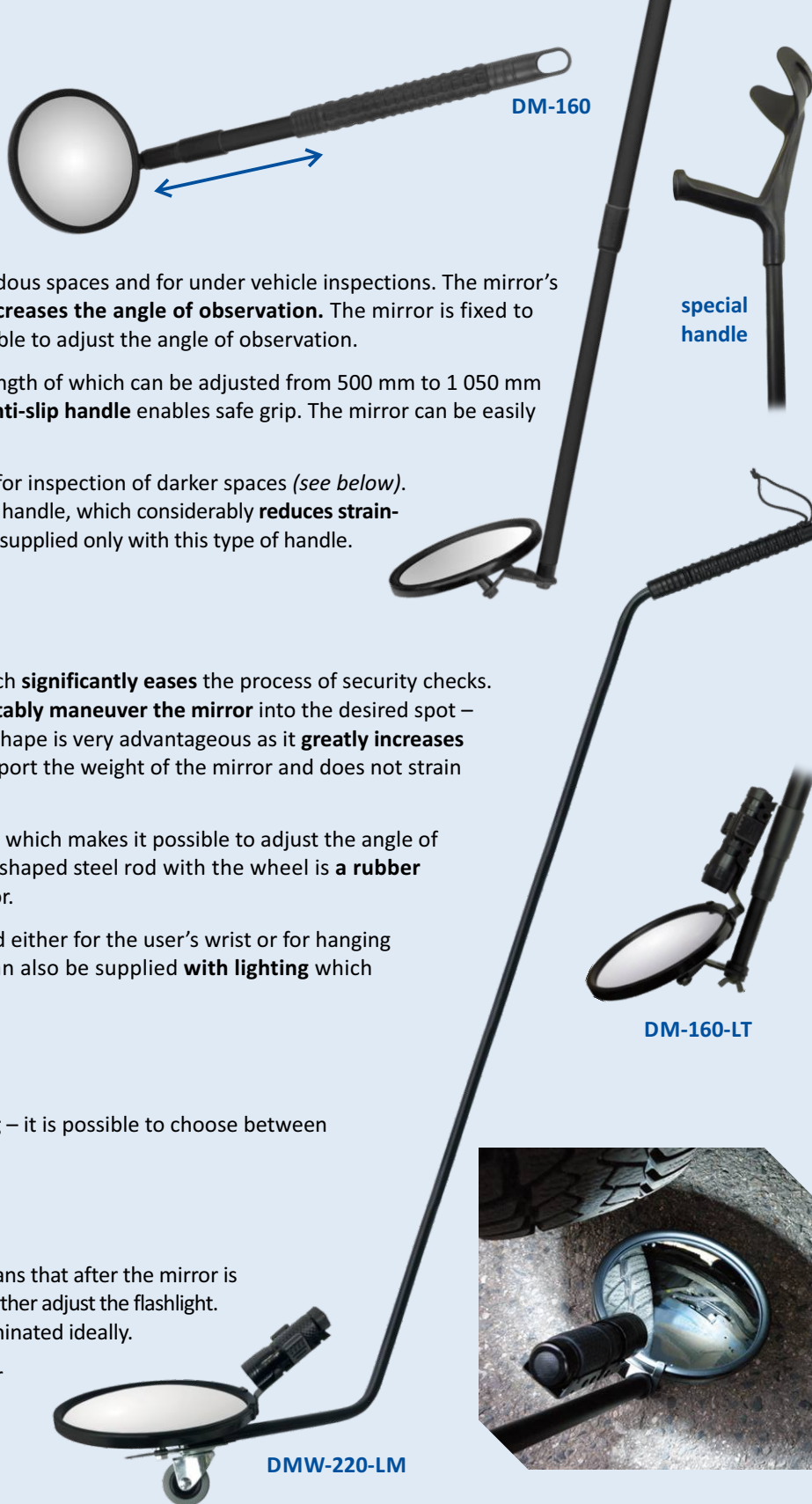
- **MAGNUM** with 14 LED – *see page 40*
- **TREX** with 5W Cree LED chip – *see page 40*

The flashlight is fastened directly to the mirror. It means that after the mirror is adjusted into the optimal angle, it is not necessary to further adjust the flashlight. Thanks to this the searched space will always be illuminated ideally.

The flashlight can be **easily removed** from the mirror and used separately. Power supply of both flashlights is ensured by 3 alkaline AAA batteries.

DMB-160 Nylon bag for the DM-160 detection mirror

This bag made from high quality **nylon fabric** protects the mirror during transport and storage. It can be closed with a **zipper** and is equipped with **2 handles**. There are also **two loops for attaching the shoulder strap**.



Designation of the mirror	Diameter of the mirror	Diameter of reflective surface	Lighting	Weight
DM-160	162 mm	145 mm	–	584 g
DM-160-LM	162 mm	145 mm	MAGNUM	789 g
DM-160-LT	162 mm	145 mm	TREX	808 g
DM-220	218 mm	204 mm	–	965 g
DM-220-LM	218 mm	204 mm	MAGNUM	1 225 g
DM-220-LT	218 mm	204 mm	TREX	1 225 g
DMW-220	218 mm	204 mm	–	1 696 g
DMW-220-LM	218 mm	204 mm	MAGNUM	1 925 g
DMW-220-LT	218 mm	204 mm	TREX	1 925 g

PISTOL AND RIFLE MAGAZINE HOLDERS

MH-x4 Plastic holder for double stack magazine 9mm Luger

This **self-locking** universal holder is designated for carrying of broader range of **double stack** magazines **9mm Luger** for the most frequently used service guns used all over the world – such as:

- Glock
- SIG Sauer P226 / P229
- SW MP9
- Beretta M9
- Taurus 92 / 99
- CZ 75 Compact
- Grand Power K100
- Walther P99

MH-64
khaki



When the special insert we can supply for an extra price is used, the holder can support the **shortened magazines** for the **Glock 26** handgun as well.

You can also carry the .40 SW magazine in this holder.

The holder enables a **quick drawing** of the magazine. The sophisticated design of the **fixation spring** will be appreciated not only by armed forces members, but also by shooters of action shooting disciplines.

This holder is available in colors:



MH-04



MH-MH-x4

MH-MH-x4 Double swiveling plastic holder for two magazines 9mm Luger

Double **swiveling** plastic holder consists of two holders **MH-x4** (for 9mm magazine) connected by special adaptor. Advantage of this solution consists in **saving the space on the belt**.

The holder enables **smooth rotation in the range of 360 degrees** without the use of any tool (there are 16 possible fixed positions). Both holders rotate in respect to the belt simultaneously, while their mutual position remains unchanged.




Safety strap for magazine holder (9mm Luger)

Magazine holders (9mm Luger) can be equipped with a safety strap, which for example prevents the possibility of the magazine being yanked out by an aggressor or which may be required by the user's service regulations.

The design of the safety strap makes it possible to **shorten it to fit the specific size of the magazine** in use. The manufacturer supplies the magazine holder with the safety strap **already attached** – the type designation is extended by the letter **"S"** (e.g. **MH-04-S**, **MH-64-S**, **MH-MH-54-S**...).



MH-x4-S

Designation of the holder		Type of the fixation clip	Rotation (360°)
MH-04	MH-MH-04	UBC-01 belt clip	●
MH-14	MH-MH-14	UBC-02 belt clip	●
MH-24	MH-MH-24	paddle	●
MH-34	MH-MH-34	UBC-03 belt clip	●
MH-44	MH-MH-44	UBC-04 MOLLE clip	●
MH-54	MH-MH-54	UBC-05 belt clip	 ●
MH-64	—	metal clip	—
MH-74	MH-MH-74	UBC-07 MOLLE clip	 ●
MH-84	MH-MH-84	UBC-08 belt clip	 ●



more information on
the clips on pages 2–5
and on the flap



MH-MH-x4

MH-x4-AR15 Plastic holder for magazine 5.56 of the rifle AR-15 / M16 / M4

This **self-locking** universal holder is designated for the carrying of **majority of metal or plastic** (Magpul, Oberland Arms etc.) **magazines 5.56** for the rifles **AR-15 / M16 / M4 / FAMAS...** The sophisticated design with **fixation spring** enables **quick drawing of the magazine** during combat re-loading.

This holder is available in colors:



The holder can be used also for other magazines of assault rifles **based on the NATO standard** – such as: British **SA80** | French **Famas** | Swiss **Sig 556** | Italian **Beretta AR70 / 90** | South Korean **Daewoo K2** | Austrian **AUG/A3** | Israeli **TAR21**.

The holder will be appreciated not only by the shooters specializing in rifle IPSC disciplines, but also by **police officers** and **soldiers** who use similar weapons in their service.



Each user can himself set the desired **holding force of the magazine** with the use of 3 spacers supplied with the holder.

MH-x4-AR15



MH-x4-AK



MH-x4-AK Plastic holder for magazine of the rifle AK-47 / AK-74

This **self-locking** universal holder is designated for carrying of **all standard magazines** for the rifle **AK-47** (caliber 7.62×39), **AK-74** (caliber 5.45×39) and **other magazines** based on the AK-47 construction.

The sophisticated design with **fixation spring** enables **quick drawing of the magazine** during **combat re-loading**.

This holder is available in colors:



MH-MH-x4-AR15 MH-MH-x4-AK

Double swiveling plastic holder for two rifle magazines

Double **swiveling** plastic holder consists of two holders **MH-x4-AR15** or **MH-x4-AK** connected by special adaptor. Advantage of this solution consists in **saving the space on the belt**.

The holder enables **smooth rotation in the range of 360 degrees** without the use of any tool (there are 16 possible fixed positions). Both holders rotate in respect to the belt simultaneously, while their mutual position remains unchanged.

MH-MH-x4-AR15



Designation of the holder

Type of the fixation clip

Rotation (360°)

MH-04-AR15	MH-MH-04-AR15	MH-04-AK	MH-MH-04-AK	UBC-01 belt clip	•
MH-14-AR15	MH-MH-14-AR15	MH-14-AK	MH-MH-14-AK	UBC-02 belt clip	•
MH-24-AR15	MH-MH-24-AR15	MH-24-AK	MH-MH-24-AK	paddle	•
MH-34-AR15	MH-MH-34-AR15	MH-34-AK	MH-MH-34-AK	UBC-03 belt clip	•
MH-44-AR15	MH-MH-44-AR15	MH-44-AK	MH-MH-44-AK	UBC-04 MOLLE clip	•
MH-54-AR15	MH-MH-54-AR15	MH-54-AK	MH-MH-54-AK	UBC-05-A belt clip	•
MH-74-AR15	MH-MH-74-AR15	MH-74-AK	MH-MH-74-AK	UBC-07 MOLLE clip	•
MH-84-AR15	MH-MH-84-AR15	MH-84-AK	MH-MH-84-AK	UBC-08 belt clip	•



more information on the clips on pages 2–5 and on the flap

MH-x4-MP5 Plastic holder for magazine of the rifle HK MP5 / UZI

This **self-locking** universal holder is designated for very convenient placement of a back-up magazine for 9mm police submachine gun **HK MP5** and **UZI**.

The sophisticated design with **fixation spring** enables **quick drawing of the magazine**.

The holder is made from **highly resistant plastic** and can also support the magazines for:

- rifles of the type **AR-15** (9 mm Luger type)
- submachine guns **Brügger & Thomet** (9 mm Luger type)
- handguns with the caliber **.45 Auto** with double stack magazine (e.g. HK Mark 23, Para Ordnance P14, Glock 21)
- submachine guns **vz. 61 Škorpion** (20-round magazine)

This holder is available in colors:



MP5

vz. 61 Škorpion



MH-x4-MP5

MH-x4-EVO Plastic holder for magazine CZ Scorpion EVO / GP Stribog

This **self-locking** universal holder is designated for the carrying of a back-up magazine for submachine gun **CZ Scorpion EVO** and for guns based on **GP Stribog** line (9×19 Luger), incl. 30-round curved magazine.

The sophisticated design with **fixation spring** enables **quick drawing of the magazine**.

The holder is made from **highly resistant plastic** and can also support the magazines for:

- personal defense weapons **HK MP7**
- pistol **FN Five-seveN® Mk2**

This holder is available in colors:



EVO
30-round
magazine

Stribog
20-round
magazine



MH-x4-EVO



MH-64-MP5

MH-MH-x4-MP5 MH-MH-x4-EVO

Double swiveling plastic holder for two magazines

Double **swiveling** plastic holder consists of two holders **MH-x4-MP5** (for MP5 / UZI magazine) or two holders **MH-x4-EVO** (for EVO / Stribog magazine) connected by special adaptor. Advantage of this solution consists in **saving the space on the belt**.

The holder enables **smooth rotation in the range of 360 degrees** without the use of any tool (there are 16 possible fixed positions). Both holders rotate in respect to the belt simultaneously, while their mutual position remains unchanged.



MH-MH-x4-EVO



MH-MH-x4-MP5



MH-x4-EVO-S

Safety cover for EVO magazine holder

Holders for EVO magazine can be equipped with a safety cover, which for example prevents the possibility of the magazine being yanked out by an aggressor or which may be required by the user's service regulations. Available in **black**, **khaki** (coyote tan) and **olive drab** colors.

The manufacturer supplies the magazine holder with the safety strap **already attached** – the type designation is extended by the letter **"S"** (e.g. **MH-04-EVO-S**, **MH-MH-14-EVO-S**...).

Designation of the holder				Type of the fixation clip	Rotation (360°)
MH-04-MP5	MH-MH-04-MP5	MH-04-EVO	MH-MH-04-EVO	UBC-01 belt clip	●
MH-14-MP5	MH-MH-14-MP5	MH-14-EVO	MH-MH-14-EVO	UBC-02 belt clip	●
MH-24-MP5	MH-MH-24-MP5	MH-24-EVO	MH-MH-24-EVO	paddle	●
MH-34-MP5	MH-MH-34-MP5	MH-34-EVO	MH-MH-34-EVO	UBC-03 belt clip	●
MH-44-MP5	MH-MH-44-MP5	MH-44-EVO	MH-MH-44-EVO	UBC-04 MOLLE clip	●
MH-54-MP5	MH-MH-54-MP5	MH-54-EVO	MH-MH-54-EVO	UBC-05 belt clip	●
MH-64-MP5	—	MH-64-EVO	—	metal clip	—
MH-74-MP5	MH-MH-74-MP5	MH-74-EVO	MH-MH-74-EVO	UBC-07 MOLLE clip	●
MH-84-MP5	MH-MH-84-MP5	MH-84-EVO	MH-MH-84-EVO	UBC-08 belt clip	●



more information on
the clips on pages 2–5
and on the flap



TACTICAL TARGETS SERIES



No. 1



supplementary sheet – 1a



supplementary sheet – 1b



supplementary sheet – 1d



supplementary sheet – 1c

Dimensions of targets:
600 × 850 mm,
600 × 880 mm (No. 7)

Dimensions of
supplementary sheets:
466 × 329 mm

These targets are possible to
use in **5 different versions** –
"situations" which are created
with **4 supplementary sheets**.



No. 2



No. 3



No. 6



No. 7 – SNIPER Target



No. 8 – Hostage and the Offender



ACCESSORIES FOR FIREARMS

PS-01 Pressure switch for tactical flashlight

Designed for the **HELIOS** and **BARRACUDA** flashlights. It can be extended from 280 mm **up to 800 mm**.



PS-01

WG-01 Additional handle for grip of the gun

The handle is fastened to the gun on the **RAIL 98 mm** (vz. 58, AK-47). It significantly increases the firm-ness and stability of holding. It is fastened by its turning around the vertical axis.

Head of the handle is made of **hardened duralumin type 6061**. The body of the handle is made of **black polyamide**. Unlike fully plastic handles this handle has **higher resistance**. It is successfully used by French forces in Afghanistan.

Weight 116 g. Total length 100 mm. Length of the handle itself 87 mm.



WG-01

WS-01 Tactical sling for carrying of a long weapon

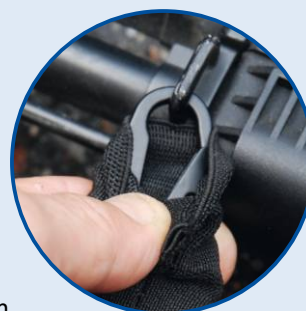
This **two-point** tactical gun sling facilitates comfortable carrying of a long weapon. Your weapon is ready for immediate use while **your hands remain freed** for other activities. The gun sling does not take up too much space on your gear thanks to its advantageous **width of only 30 mm**. The sling's material is sufficiently supple so as not to limit you during prolonged carrying.

A 20-cm long flexible strap (called bungee) is located at one end of the gun sling. The **bungee strap** allows for quicker handling of the weapon even in full gear. The bungee strap **lowers the risk of collision** when swinging the weapon into a shooting position and enables the user to quickly perform this crucial movement even when the sling is tightly fastened. The flexible bungee cords are placed inside a protective nylon cover.

A **movable loop** allows for swift adjustment of the gun sling into optimum length for the specific shooter (from 104 to 156 cm). The gun sling's length can be changed according to current requirements of the gear or situation – even when the sling is already in position on the shooter's body.

The weapon is attached with **two metal snap-hooks**. The hooks have a nylon cover which **absorbs their clicking** against the weapon and thus protects it from damage. An **emergency plastic clip** for quick unfastening of the weapon is placed at easy reach in the front part of the gun sling.

Total sling length: **104–156 cm** (depending on the setting). Weight: 187 g. Sling color: black.



WS-01



BELTS

KO-01 Leather belt

This elegant leather belt from quality hide has been **hand-crafted** by experienced leathersmiths. The **cow hide** with the thickness of **3,5 mm** is very solid and perfectly **resists any damage** or moisture. The belt has the width of **3,5 cm**.

The elegant look of the belt is enhanced by the **buckle in silver color**. The belt has 6 holes with 35 mm in between them. There are two straps to hold the loose end of the belt – one is fixed while the other can be moved according to need.

KO-01



Size	M	L	XL
Waist size	95 cm	105 cm	115 cm
Length of the belt	110 cm	120 cm	130 cm
Weight of the belt	160 g	172 g	184 g

DB-01 Duty belt

The belt is made from extremely durable material with **hemmed edges** and **plastic bracing** on the inside. The inner side of the belt is lined with **Velcro loops**. The width of the belt is **50 mm**. Color: black.

The robust plastic **three-point buckle** ensures quick and secure fastening of the belt. The loose ends of the belt are bent and fixated by plastic loops.

The belt's design ensures its high durability even during demanding duty.

Size	S	M	L	XL	XXL	XXXL
Waist size	75–95 cm	85–105 cm	95–115 cm	105–125 cm	115–135 cm	125–145 cm
Length of the belt	120 cm	130 cm	140 cm	150 cm	160 cm	170 cm



Velcro lining on the inner side of the belt

BACKPACKS

UTB-01 Tactical backpack

The ESP tactical backpack facilitates **easy transport of a large quantity** of useful equipment and ensures its **immediate availability** during police interventions or during emergency rescue actions.

Thanks to its **special design**, it is possible to put into this backpack in a well-organized manner the equipment exactly according to the needs and specific requirements of activities of the given unit.

Systemic design of the inside of the backpack using the **carrying system of straps** allows arbitrary fixation of the chosen equipment in a **modular way** – vertically and horizontally, with the use of plastic clips, metal clips or holders equipped with the **MOLLE system**.

The same carrying straps are situated also on the outside of the tactical backpack, which is also equipped with a **large Velcro pad** used to attach **identification label** – such as POLICE, SWAT, etc. Both front and back of the backpack also contain **special pockets**, into which you can place **ballistic protection**.

Dimensions of the backpack: 500 × 300 × 100 mm (height × width × depth).



NEW PRODUCTS

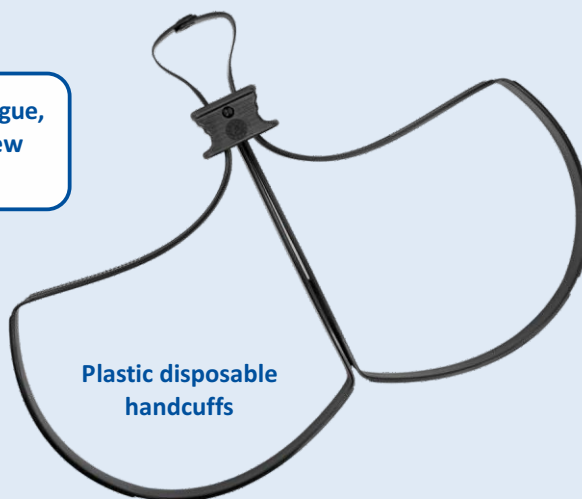


Visit our website or our online catalogue, where you can find all the brand new products in our assortment.

www.esp-products.com



www.esp-link.com/catalogue



Plastic disposable handcuffs



Door mounted TORNADO pepper spray with light

A FEW WORDS ABOUT OUR COMPANY

- One of the **world's largest manufacturers** in the field of varied security equipment for professional use and for personal defense
- ESP products are used daily by a wide range of armed forces as well as the general public all over the world
- **Czech company** with tradition since 1992
- ESP products are remarkable for their **sophisticated design and high reliability**
- The **numerous patents** granted to our company confirm the uniqueness of ESP products
- Proud holder of the **ISO 9001 quality certificate**

Customers use
our products in

103+

countries

We protect police
and armed forces for

30+

years



ESP expandable batons are widely used for example by the French law enforcement forces





Would you like to sell or use our products?

Just contact us:



www.esp-products.com



office@esp-products.com



+420 777 720 816 English

+420 732 375 846 Français

+420 774 720 803 English

+420 777 720 805 Deutsch



EURO SECURITY PRODUCTS, s.r.o.

Hyacintova 20, CZ 106 00 Prague 10,
Czech Republic

FOR REAL PROFESSIONALS