

WARNING:

It is necessary to read thoroughly this instruction before the first use of the stun gun!



STUN GUN WITH PEPPER SPRAY 200 000 V SCORPY 200



INSTRUCTION MANUAL

- A spray nozzle, first contact electrode
- B second contact electrode
- C testing electrodes
- D electrical part safety switch
- E spray trigger
- F electric part trigger
- G cover of battery and spray compartment
- H hand strap for fastening to hand

CAUTION! IMPORTANT WARNING:

1. Device is designed exclusively for self-defense.
2. Application of the stun gun in the area of head, neck and in close proximity of heart can cause the attacker serious injury of his health.
3. Do not use the stun gun in explosive and inflammable environment.



Dear Customer,

we would like to present you our model of stun gun combined with pepper spray **SCORPY 200**. Adding of defensive spray has increased radius of use of electric stun gun for defense up to the distance of 2 m (6 ft).

Stun gun and defensive pepper spray are integrated in one device and they both can be easily **operated by one hand only**. This eliminates complicated manipulation needed in case of use of independent electric stun gun and individual defensive spray.

Thanks to the device's ergonomic shape it is now possible to effect **substantially more precise aiming** at the attacker's face. It eliminates at the same time the risk of defender's hitting himself existing in case of use conventional cylindrical spray. The attacked person is now able to use in a flash exactly the kind of defense that corresponds to the kind of attack, and to combine flexibly both means of defense.

This substantially increases the chances of the attacked person to defend himself.

In case of use of the **SCORPY 200** the attacked person gains moreover another advantage thanks to the **moment of surprise**. If the attacker sees that defender has electric stun gun, he does not expect in any case to be hit by stream of spray at the distance of 2 m (6 ft).

We hope that you will never have to use this electric stun gun and that it will serve you only to increase your feeling of self-confidence and safety.

If you have the **SCORPY 200** with you, you can be sure that you have just the right means for your defense.

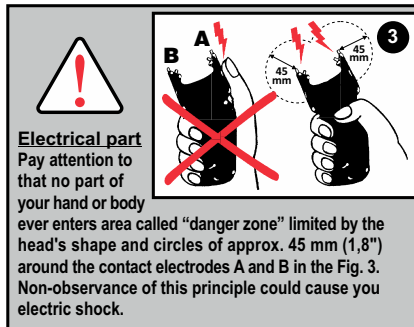
A. Safety instructions



Spray

- Activate only in case of danger, you will thus prevent an undesired hitting.
- Do not use against wind or in closed rooms.
- Spray container is under permanent pressure. Do not pierce or damage it and do not throw it into fire even when it is emptied! Protect it against direct sunrays and temperatures exceeding 50 °C (120 °F)!

• Avoid strain of the eyes, skin or mucous membrane. In case of accidental impact, rinse with strong stream of cold water and stay on fresh air. Do not use creams, ointments or oils. If the problems do not pass after one hour, contact immediately a doctor.



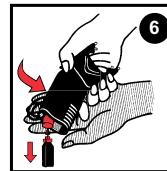
B. Installation / replacement of battery and spray

- First of all verify, whether safety switch **D** of electric part as well as spray trigger **E** are in secured position – see Figure 2.
- Open the compartment for battery and spray by slight pressing to the arrow **OPEN** of the lid **G** with its simultaneous shifting – see Figure 4.



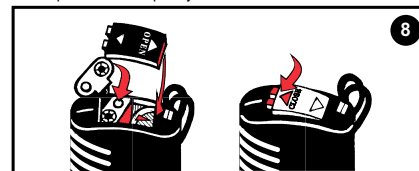
Removal of battery and spray

- The manufacturer always supplies the electric stun gun with spray; battery is supplied upon the seller's requirements. If the stun gun is supplied without a battery, the space of battery compartment is filled with paper insert.
- Exempt the battery from the battery compartment and disconnect it from contact plate, optionally take out the paper insert.
- Now it is possible to with slight tapping on palm of the hand disengage the spray and to remove it. The used spray can be **soiled with active agent**, that's why you must manipulate with it very carefully – see Figure 6.
- Wash your hands thoroughly after replacement of spray.



Installation of spray and battery

- Spray must be inserted into the device **as the first item**. Hold the stun gun as it is shown in the Figure 7. After slight shaking the spray will fit into the correct position. **Avoid use of force at manipulation with the container, especially press against the spray valve – impend a discharge of spray! Prevent staining of the spray conical terminal (adapter).**
- After settlement of the container into its correct position, insert into the remaining space the battery in such a position so that the battery contacts match the contact plate. Polarity is also marked on sides of the battery compartment. Snap duly the contacts.



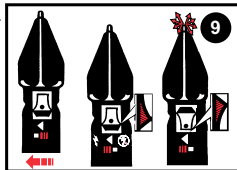
- Insert the lid **G** with skew edge, without lugs, directed to the loop **H**. Close the lid by pressing the arrow **CLOSE**.
- Stun gun is fed by one 9V battery. Use only high quality alkaline (type 6LR61) or lithium battery of the type Energizer. The battery has the lifetime of 4 years (alkaline) or 10 years (lithium) when not used.
- Use only the spray supplied by the manufacturer as refill for the **SCORPY 200**!

C. Test of stun gun's functions

- Preserve safe distance of your hand or part of your body from the "danger zone" (see Figure 3) and switch the safety lock **D** to the position **ON** (see Figure 9).
- Press the trigger **F** and electric discharge will flash between the two inner testing electrodes **C**, accompanied by noisy crack. This flash lasts for all the time of

depressing of the trigger. **Testing lasting too long time reduces service life of the used battery.**

- Before storing of the stun gun always lock the device by switching the safety lock **D** back to the position **OFF!**



D. Fastening to the belt

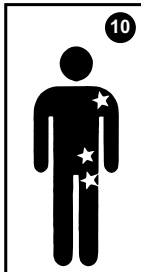
- It is possible to fasten the stun gun in case of need to the belt with help of a clip (see Fig. 1).

E. Use of the SCORPY 200

- In situations when you presume use of the stun gun we recommend to put on your wrist the strap **H** (see Fig. 1).

Electrical part

- Switch the safety lock **D** into the position **ON** and press the trigger **F** (see Fig. 9). This can be done easily with use of the middle finger and forefinger of the hand holding the stun gun.
- Touch any part of the attacker's body with both outside electrodes **A** and **B**. The most vulnerable parts are joints and places where bones protrude – shoulders or hips (see Figure 10).



Effects of electric discharge

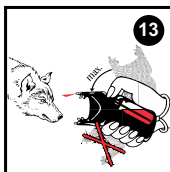
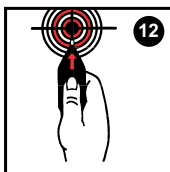
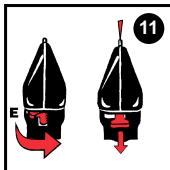
- 0,5 second ... **short electric shock** disarms the attacker causes him a muscle cramp.
- 1–3 seconds ... **medium electric shock** can cause attacker's fall to the ground and mental shock, but attacker may quickly recover and stand up again in few moments.
- 4–5 seconds ... **full electric shock** will make attacker fall to the ground, disorient him and cause him shock for several minutes.
- Do not uselessly display your stun gun in front of the attacker. Moment of surprise multiplies the device's impact and effect of the shock is thus much stronger.

WARNING:
Electric discharge lasting longer than 3 seconds will cause attacker's fall to the ground. His own weight can cause him injury during the fall.



Use of spray

- Unlock the spray by turning of the spray's trigger **E** to the right (see Figure 11).
- Aim the **SCORPY 200** at the attacker's head. You will neutralise the attacker by pressing very shortly the trigger **E**.
- Hitting of the attacker's face up to the distance of 2 m (6 ft) can cause him acute burning of eyes and coughing. The attacker is disoriented for approx. 30 minutes. The pepper spray is efficient also against the attackers acting under influence of alcohol or drugs, as well as against dogs and animals.
- In case of use of the spray it is necessary to hold the **SCORPY 200** as vertically as possible, so that driving gas does not escape from the spray's container. Maximum inclination is shown in the Figure 13.
- After each use of spray it is imperatively necessary to replace the spray charge with a new one.** Only in this way you will have a certainty of its full output in case of next use.



- SCORPY 200** may be after use of spray soiled with drops of the defensive agent. That's why it is necessary to clean it thoroughly with damp cloth and to wash your hands.

- It is possible to use the following types of sprays in SCORPY 200:**
- Pepper spray, containing a 10% solution of red pepper (OC – Oleoresin Capsicum) in incombustible, harmless solution. **Some countries allow using it only as defense against animals.**
- Service life for use of the spray is given on its container.

Use only spray supplied by the manufacturer as charge for the SCORPY 200! Only in this way you may be certain that the charge is non-flammable, electrically non-conductive and that connecting joint corresponds with its counter-piece in the **SCORPY 200** and seals tightly.



ATTENTION:
Store the spare (replacement) sprays only with the protective cover planted on. This would prevent involuntary release of the spray and possible intrusion of impurities into the spray nozzle **A**.



F. Principles of application

- Do not expose the device to high temperatures exceeding 50 °C (120 °F), e.g. do not leave it under direct sunrays behind the vehicle's window.
- Do not use electrical part in rain or in damp environment.
- Prevent clogging of the spray nozzle **A**.
- Protect the device against hard concussions.
- Do not expose it to chemicals.

The device is designed for self-defense only. In case of use it is necessary to keep in mind adequacy of defense from the legislative viewpoint. Misuse is punished.

High-voltage device: use in close proximity to electronic and electric equipment may damage them.



BEWARE:
SCORPY 200 is an efficient defensive device; you must therefore keep it out of reach of children and irresponsible persons. Do not use it against children, pregnant women, old and ill persons. Device can be sold only to persons older than 18 years.



DO NOT OVERLOOK!

There are two types of defensive sprays for **SCORPY 200** available on the market:

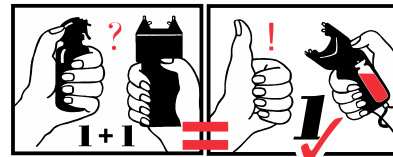
- MIST spray**
- JET spray**

Each of these two types requires **different diameter of the spray nozzle A**. Stun gun **SCORPY 200** differs in dependence on the type of used spray by colour of spray trigger **E**. This spray trigger can be either **red** or **yellow**.

For this reason it is necessary to take care during replacement of spray refill and use exactly the same type of spray as was the original one.

Yellow spray trigger **E** is used for a **MIST** spray. Conical ending on the nozzle of **spray refill must be also yellow**.

Red spray trigger **E** is used for a **JET** spray. Conical ending on the nozzle of **spray refill must be also red**.



Technical data

Type:	electric stun gun with integrated pepper spray
Output:	200 000 volts
Power supply:	1x 9V battery (type 6LR61)
Irritant supply:	pepper spray (10% OC) – 15 ml, propellant gas, non-inflammable
Height:	165 mm
Width:	62 mm
Thickness:	34 mm
Weight:	250 g (with battery)



Distribution: